

the WESTERN LANDOWNERS ALLIANCE advances policies and practices that sustain working lands, connected landscapes, and native species.



www.westernlandownersalliance.org

- ✓ Promoting good policy foundations for flexible and practical best stewardship on working lands
- ✓ Influencing the implementation of policies via cooperation with land management agencies and decision leaders
- ✓ Creating and advocating for a West-wide community of landowners, managers, and advisors committed to landscape-scale conservation on working lands



Advancing
policies and practices
that sustain
working lands,
connected landscapes
and native species.

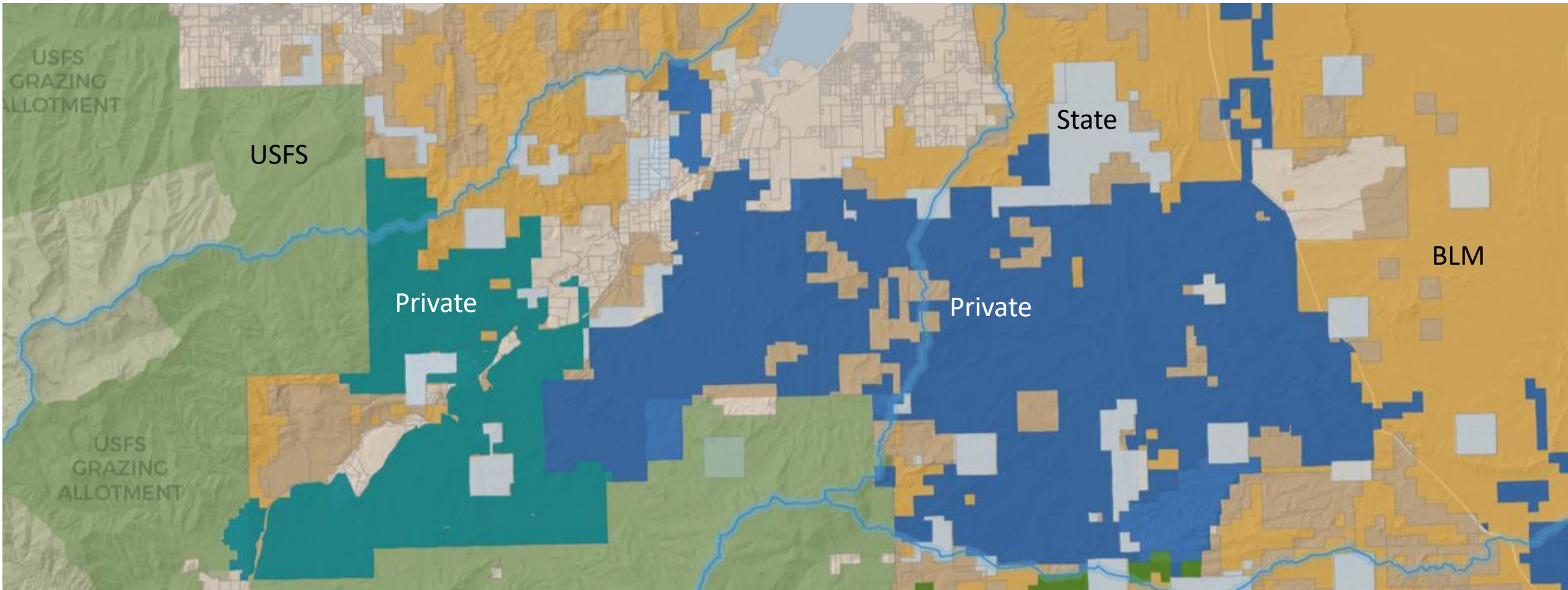






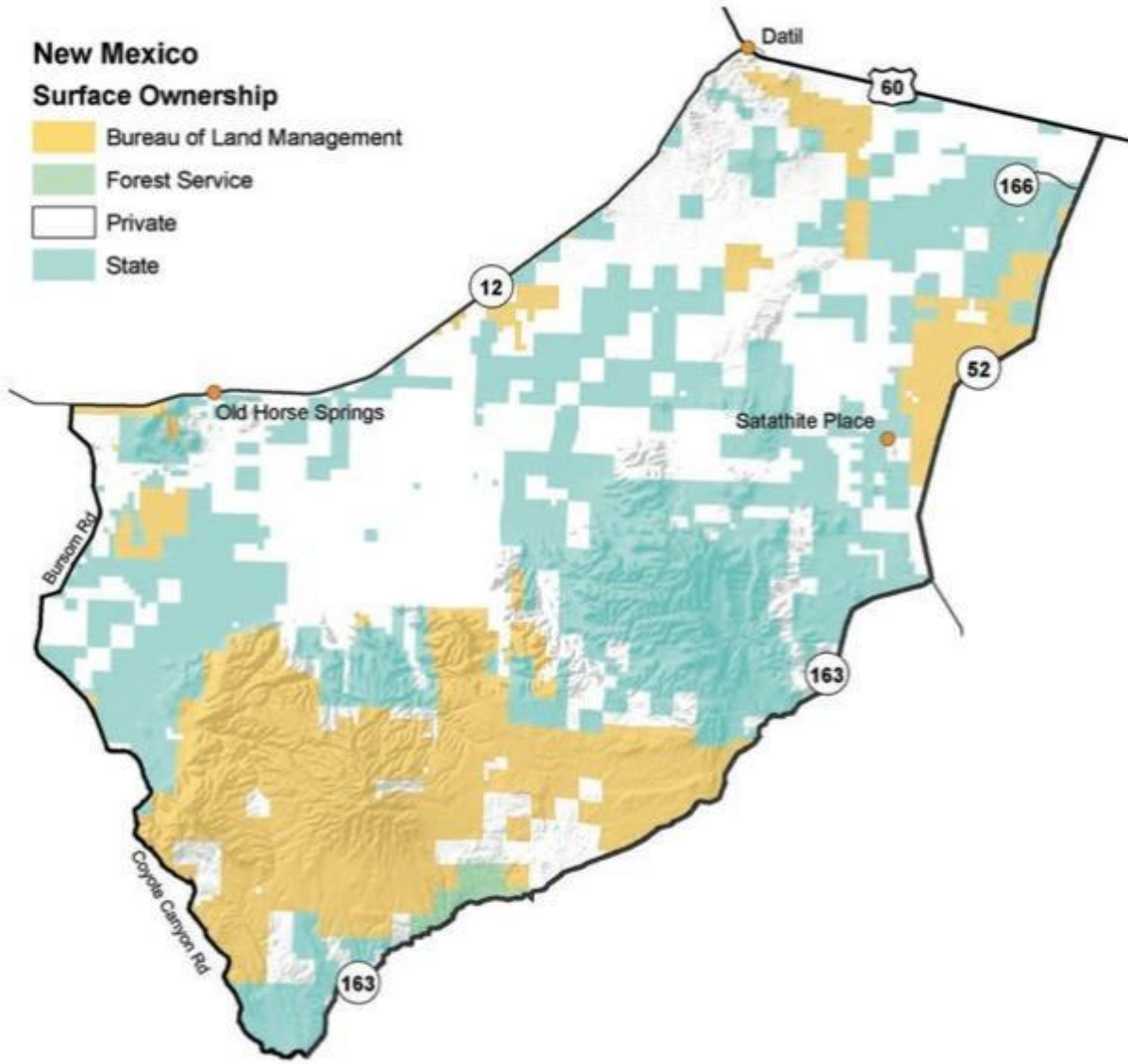


Checkerboarded land ownership in the West creates unique challenges



**New Mexico
Surface Ownership**

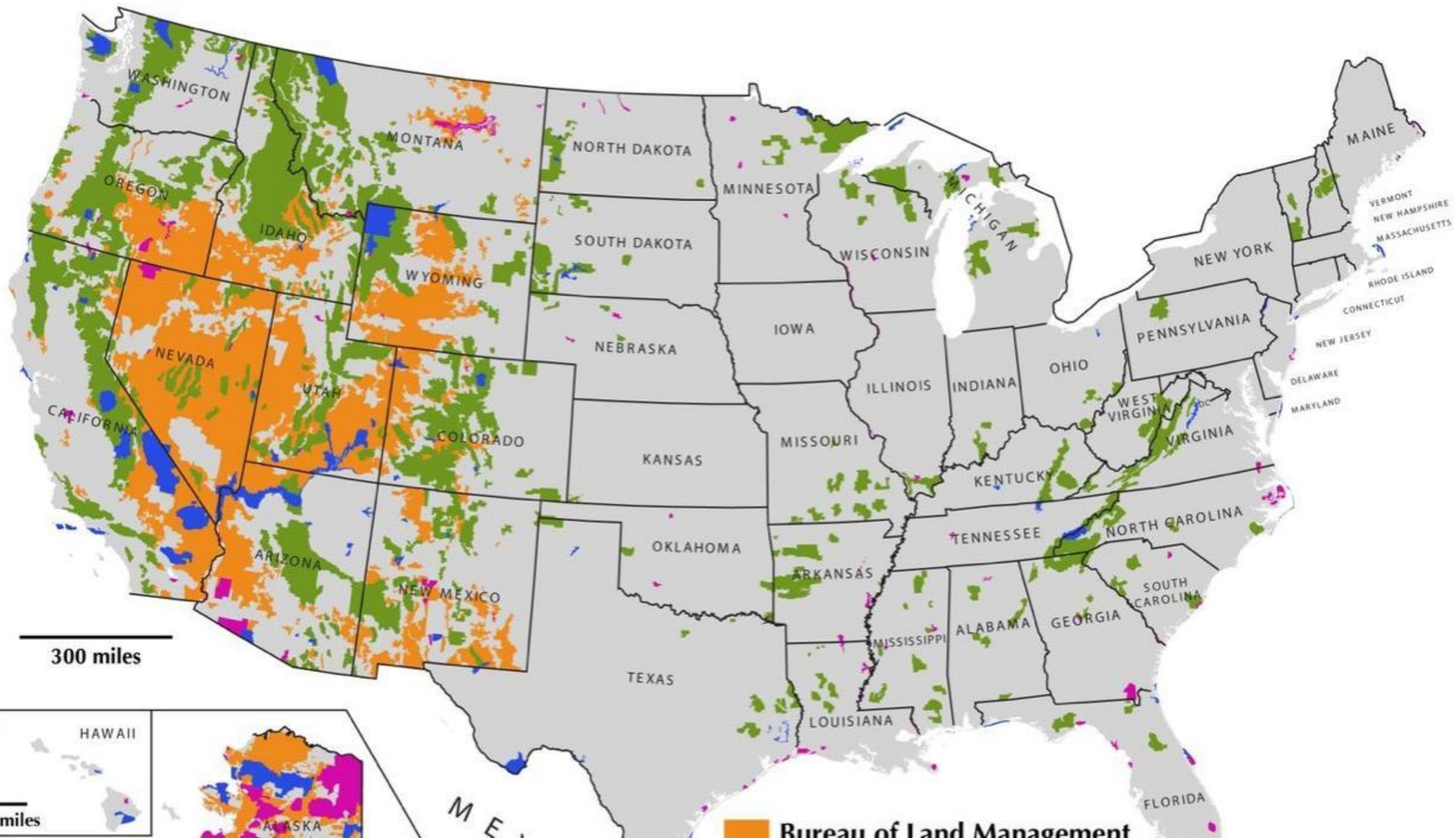
- Bureau of Land Management
- Forest Service
- Private
- State



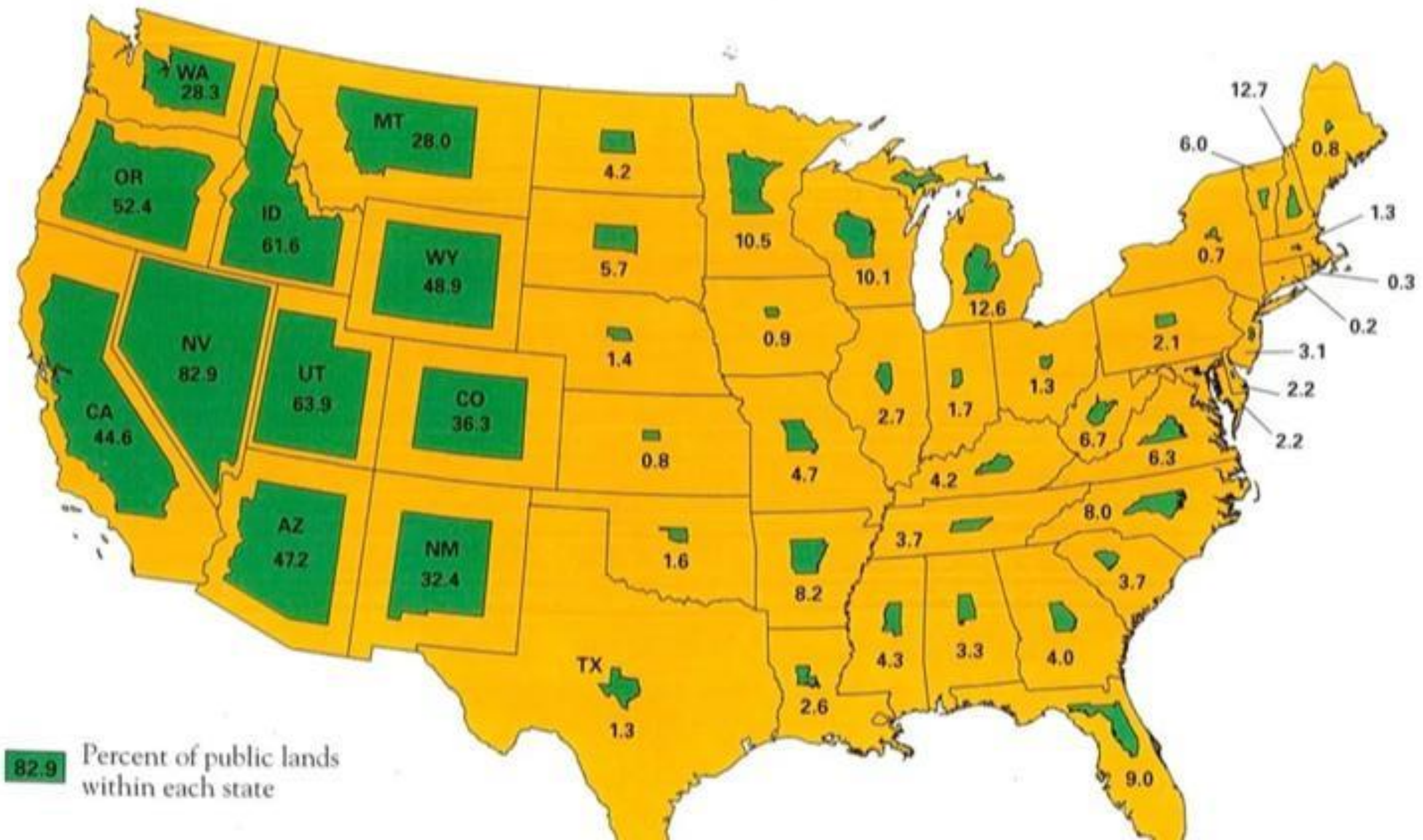
**New Mexico
Surface Ownership**

- Bureau of Land Management
- Dept. of Defense
- Forest Service
- Private
- State
- State Game & Fish



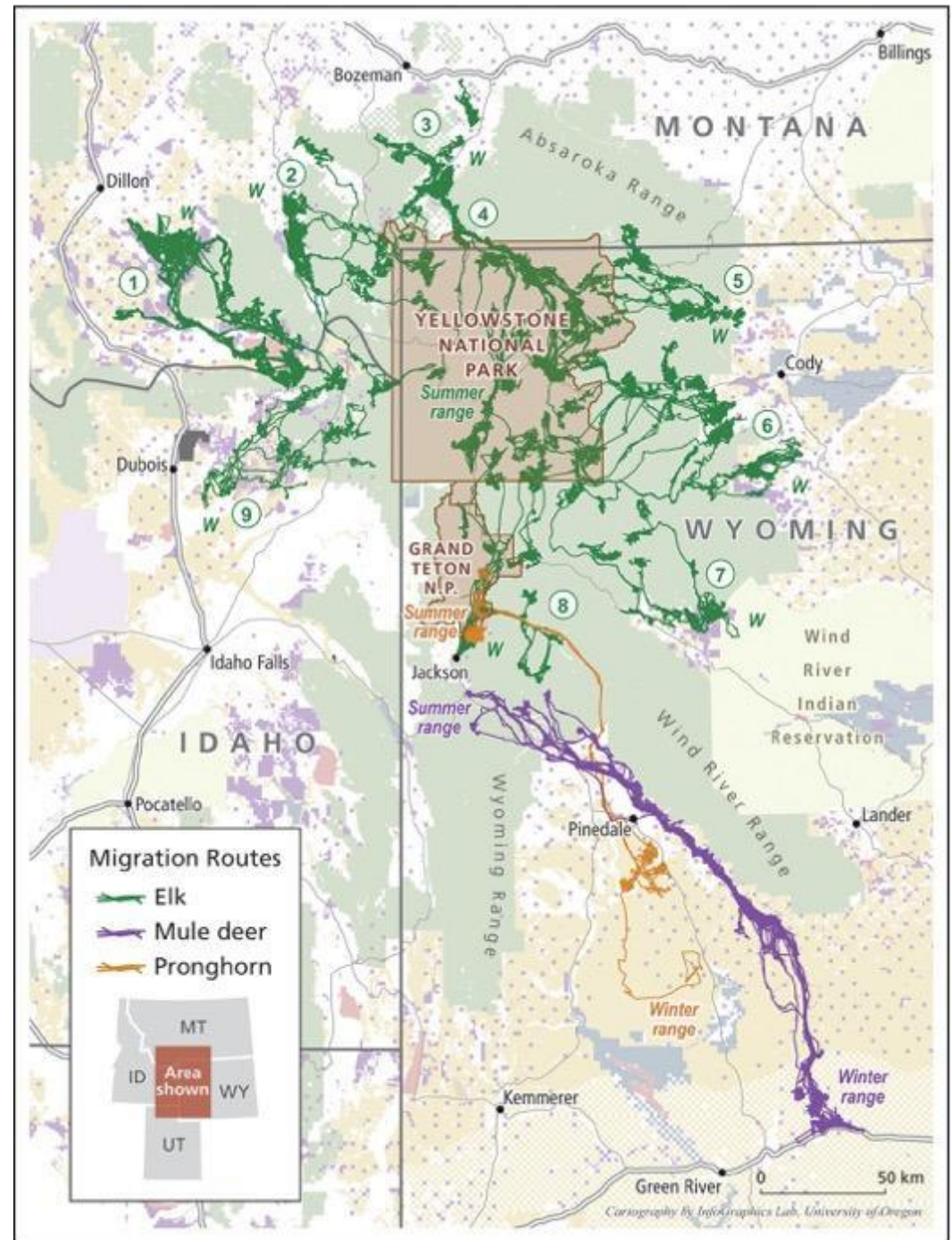


Public West, Private East





Wildlife Move Across Boundaries







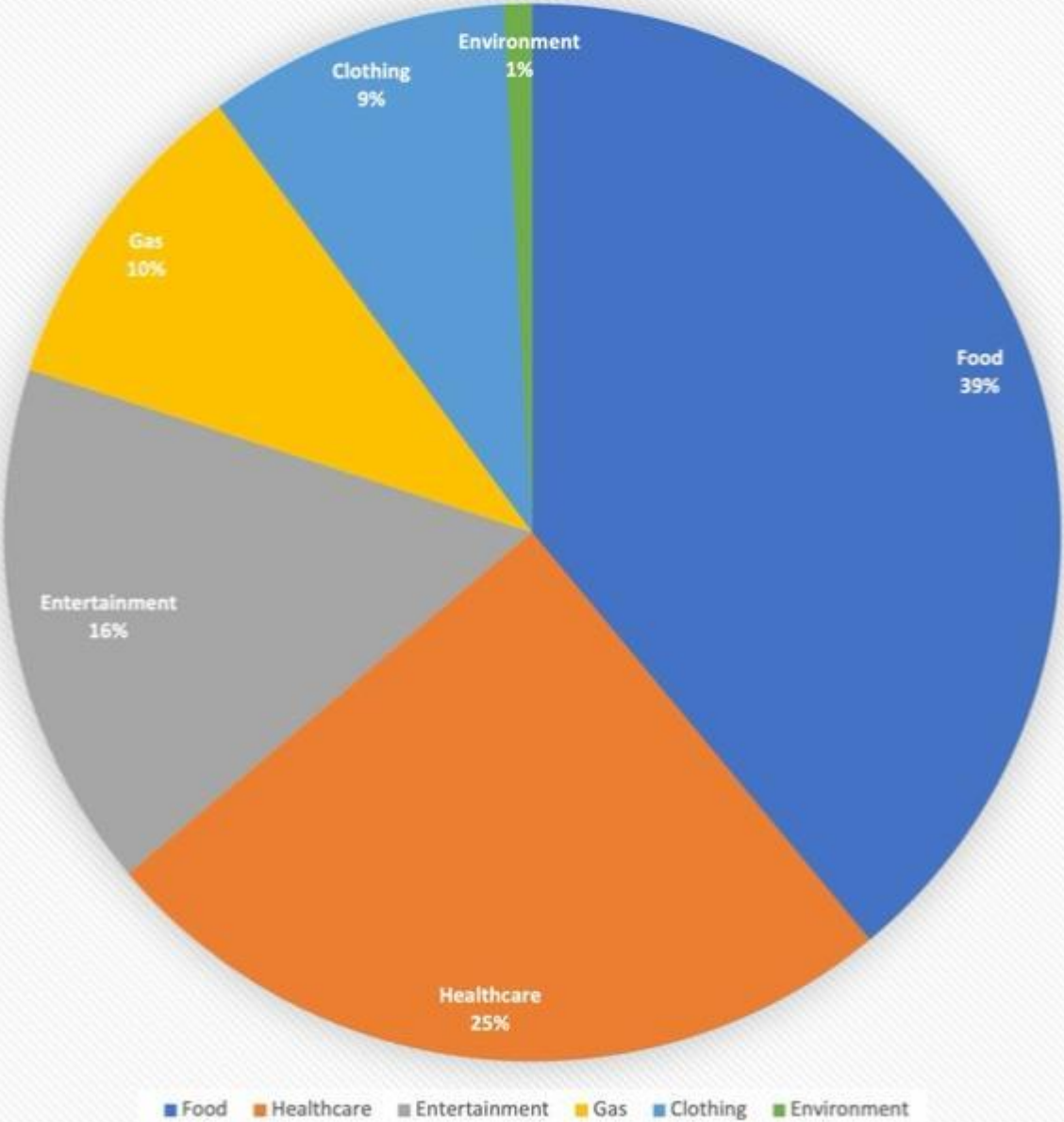


Working lands provide food, open space, habitat, energy and sequester carbon, but only if they remain economically viable.



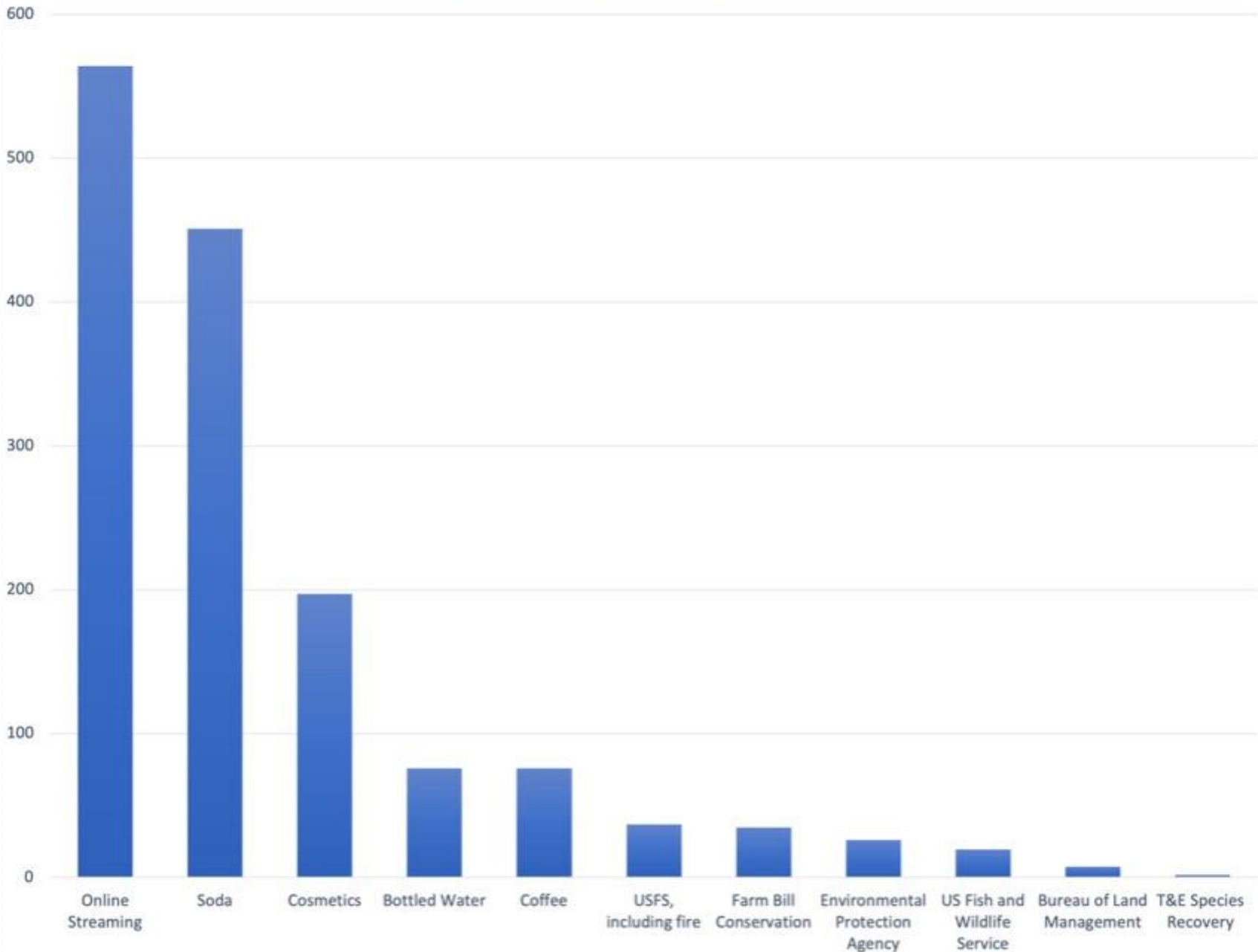


Average Annual Expenditure per Person in US



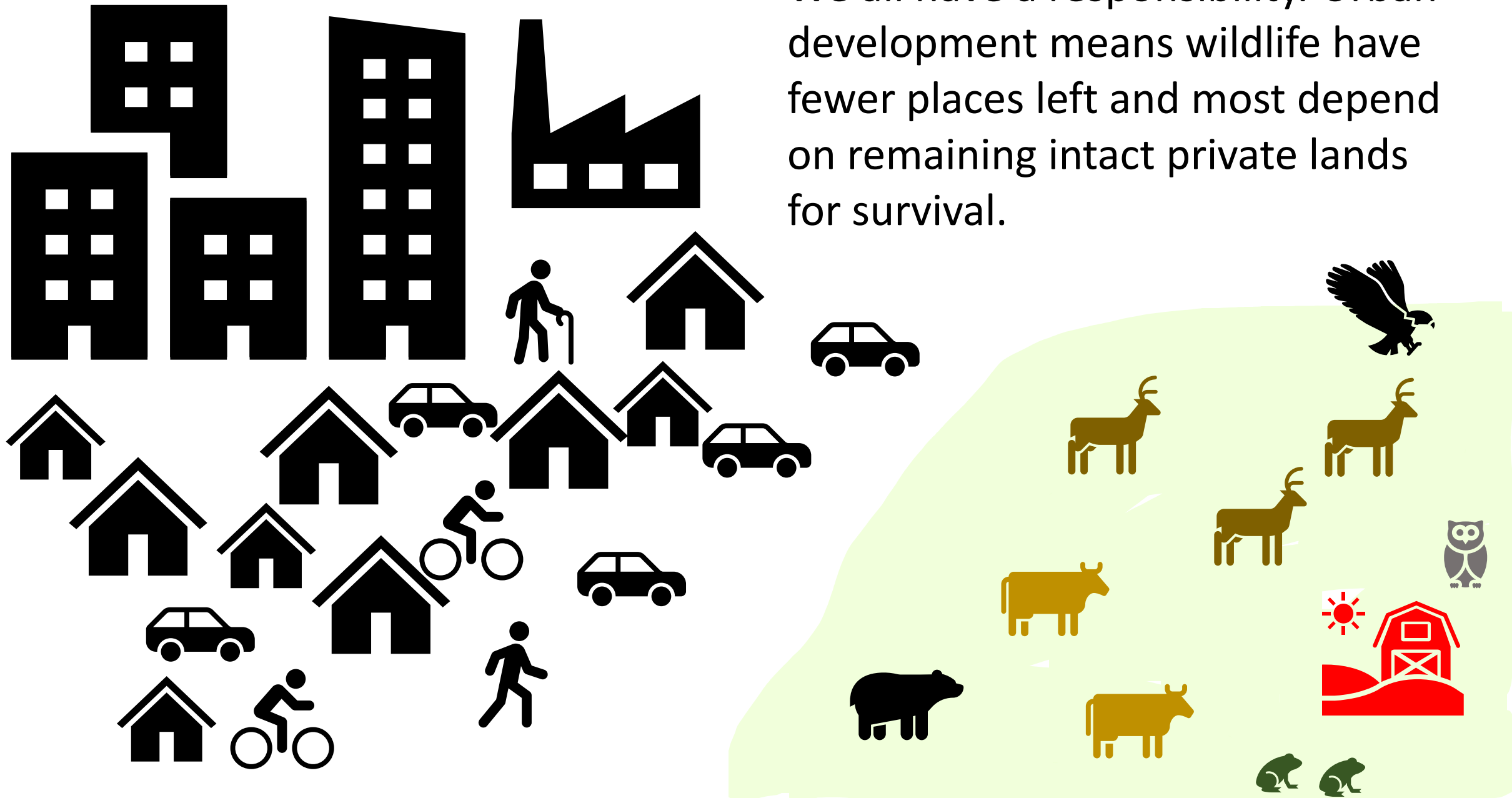
We get what we pay for.

Average Annual Spending per Person US

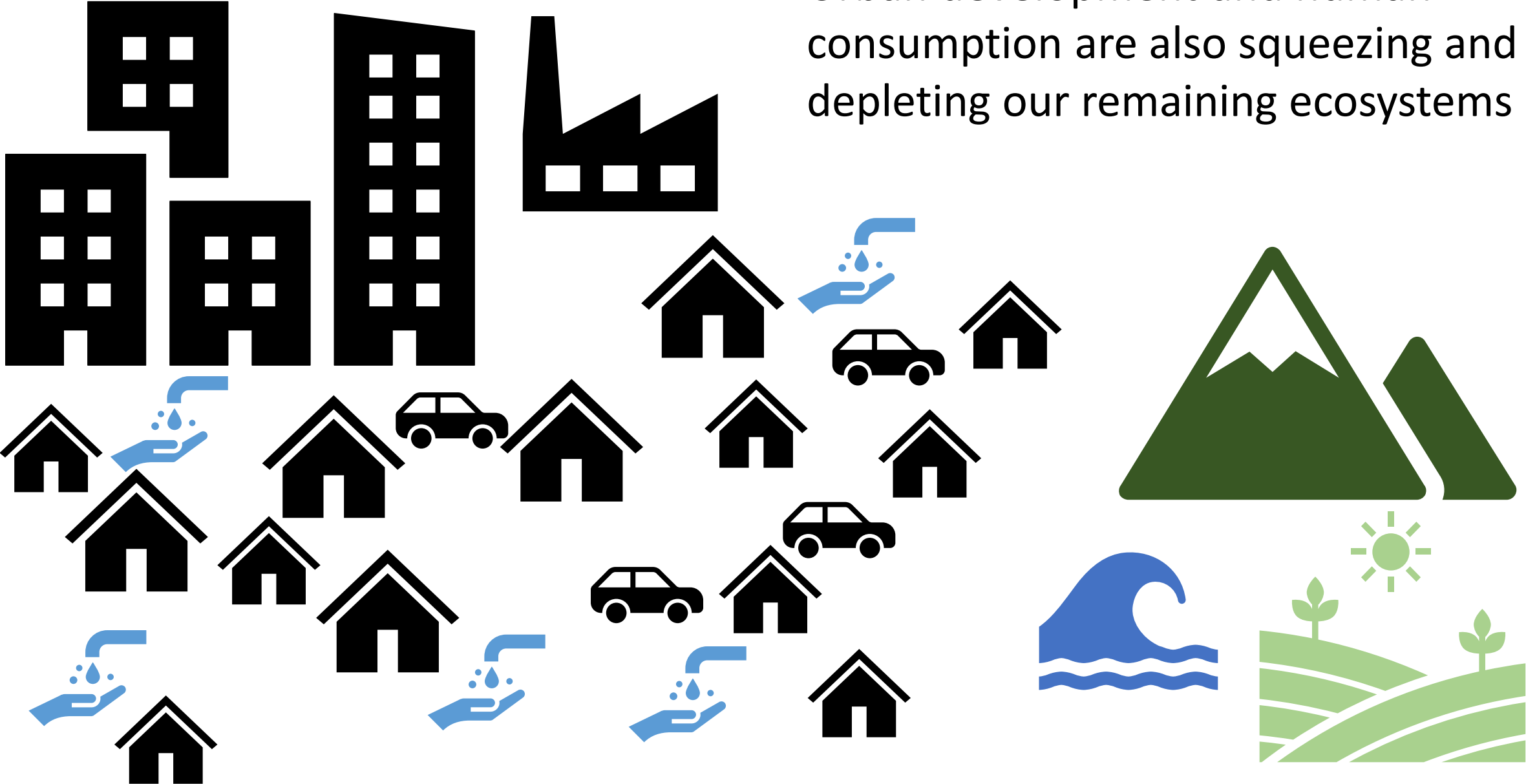


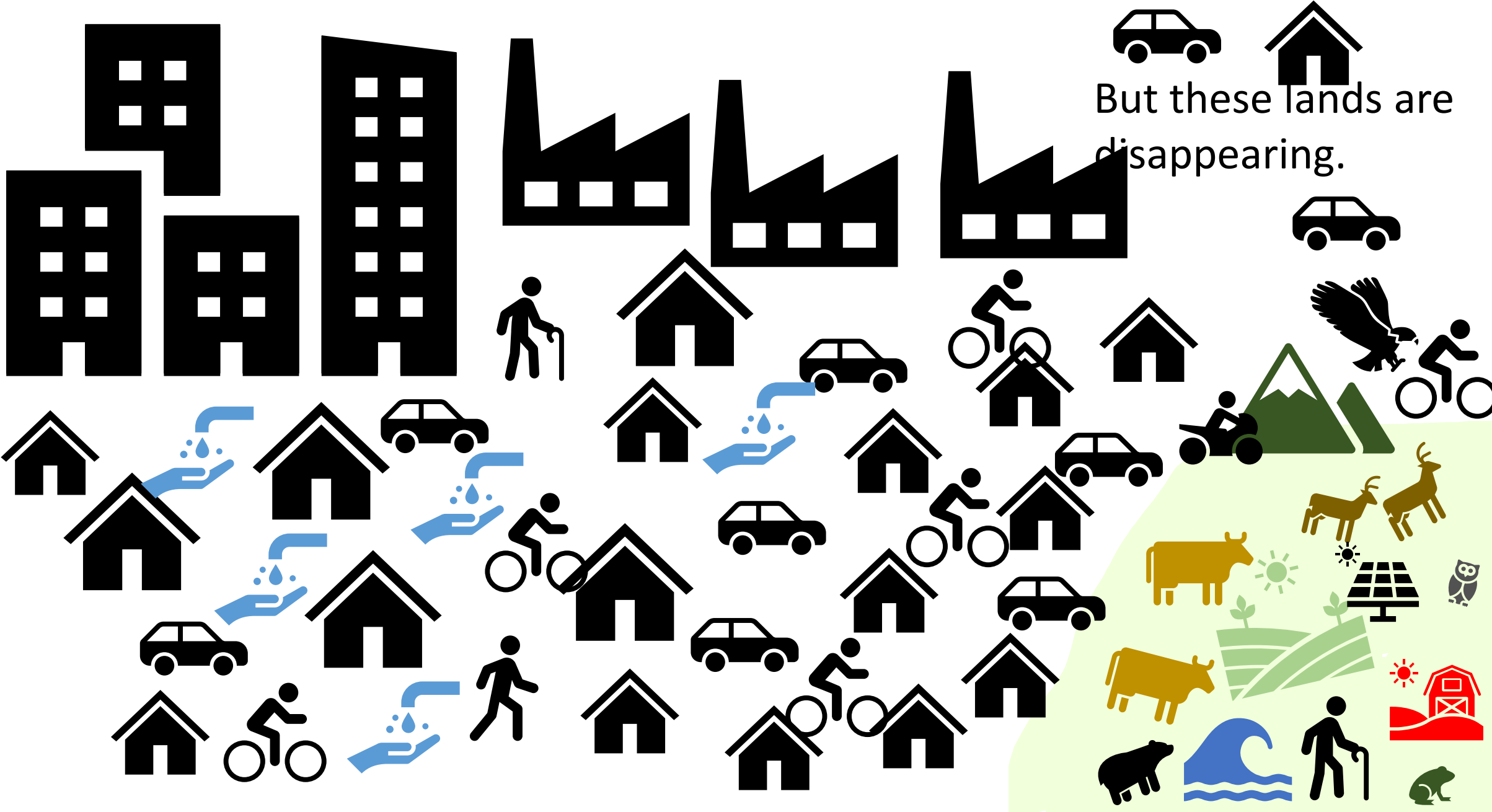
Americans have made our priorities clear.

We all have a responsibility. Urban development means wildlife have fewer places left and most depend on remaining intact private lands for survival.



Urban development and human consumption are also squeezing and depleting our remaining ecosystems





But these lands are disappearing.

Every 2.5 minutes, the American West loses a football field worth of natural area to human development.

--Disappearing West, disappearingwest.org

Over and
over,

we get
what we
pay for.





Community-Directed Funds for Community Supported Ecosystems

Ecosystems are a Shared Responsibility

- Federal \$
- State \$
- Local \$
- Business \$
- Landowners \$
- Philanthropy \$

