

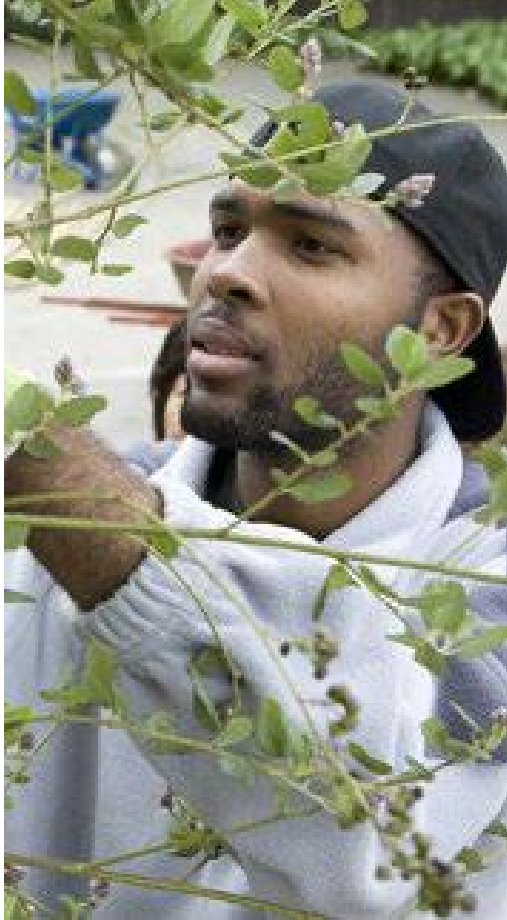
Tree Equity in a Warming World



AMERICAN FORESTS
- SINCE 1875 -



Climate



People



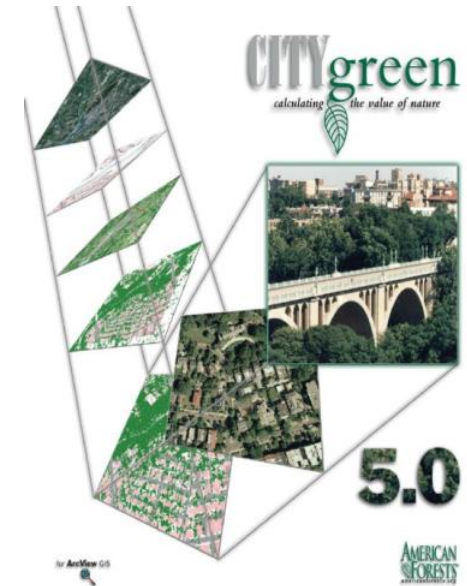
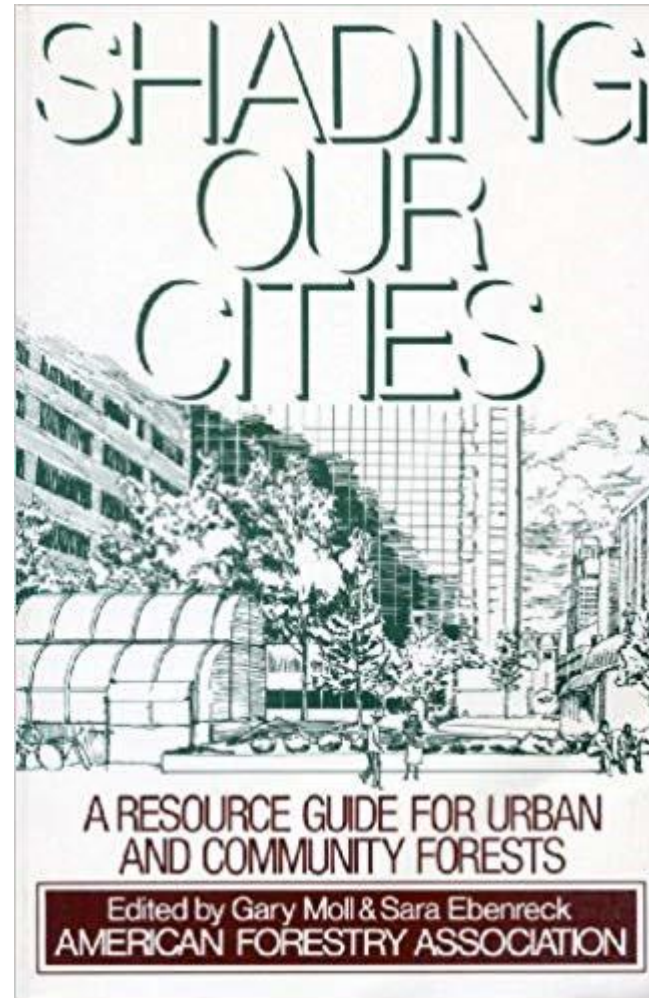
Water



Wildlife



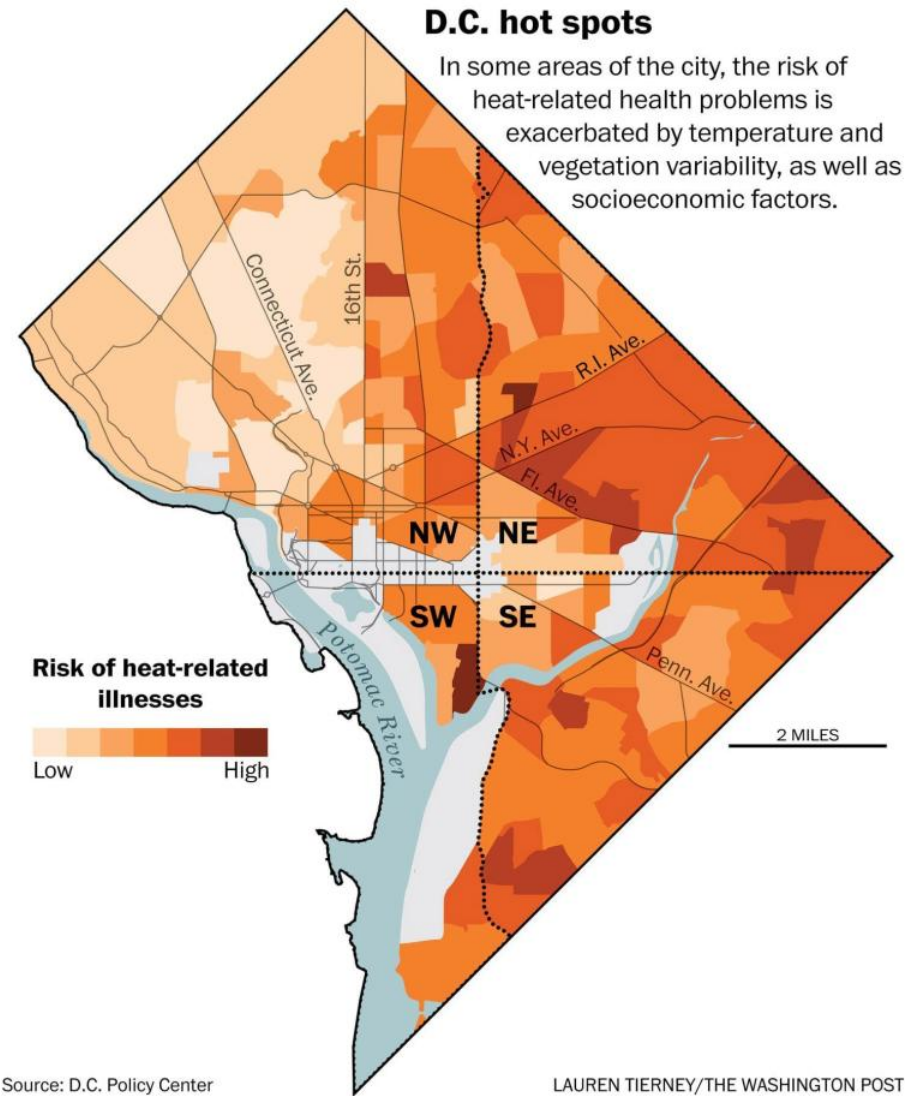
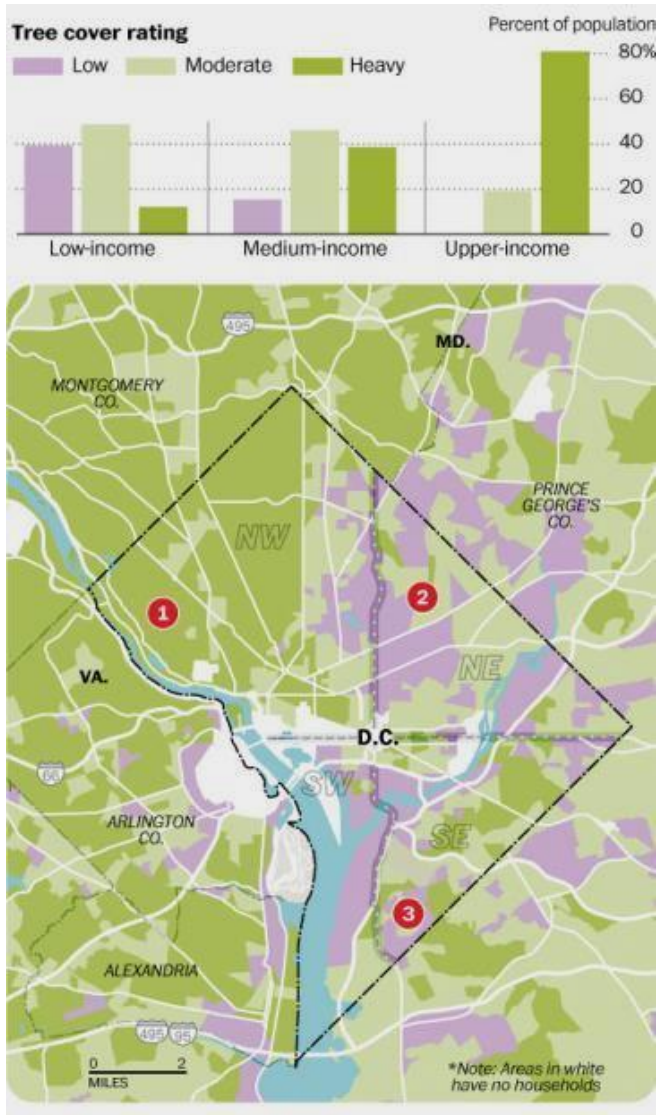
AMERICAN FORESTS



We're Committed to Urban Forests

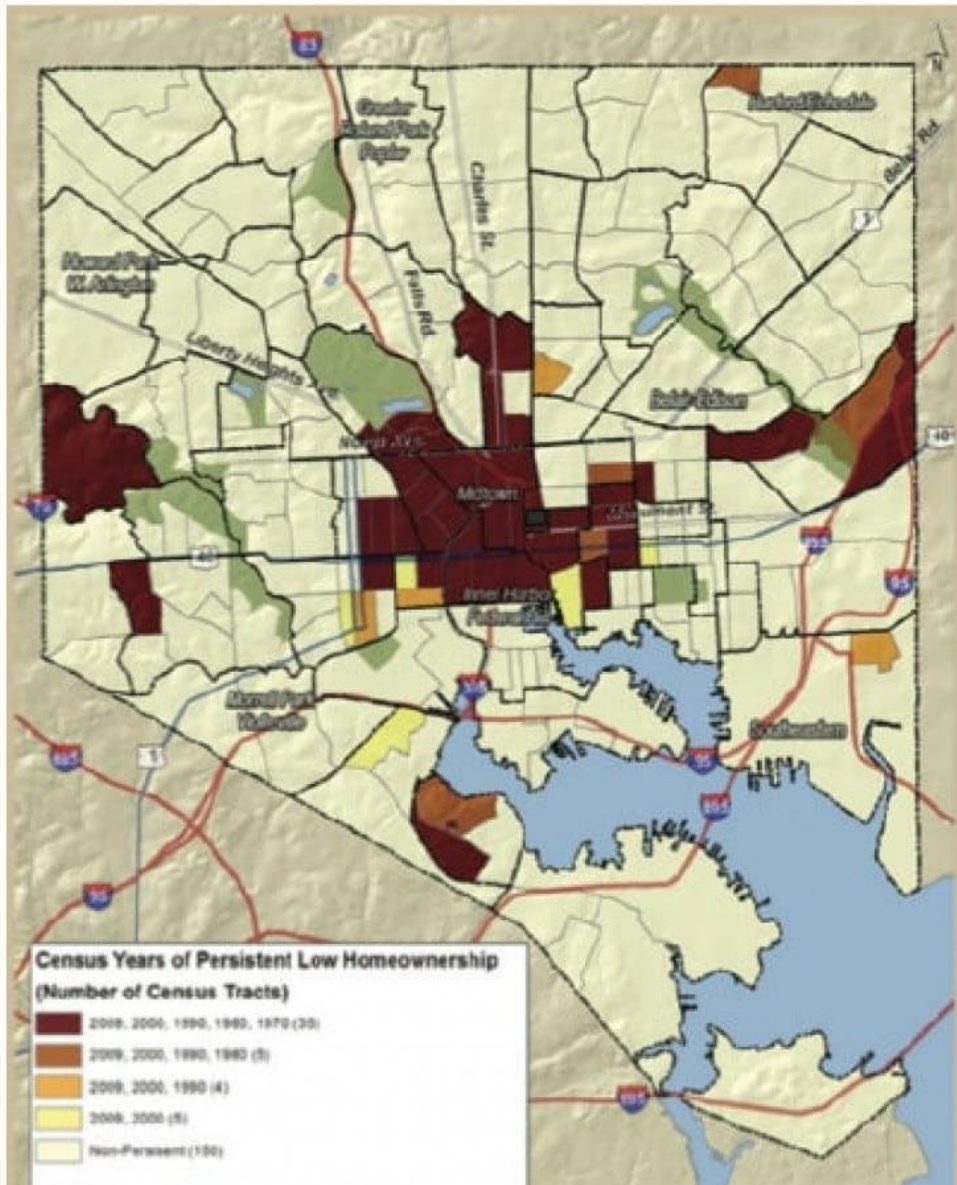
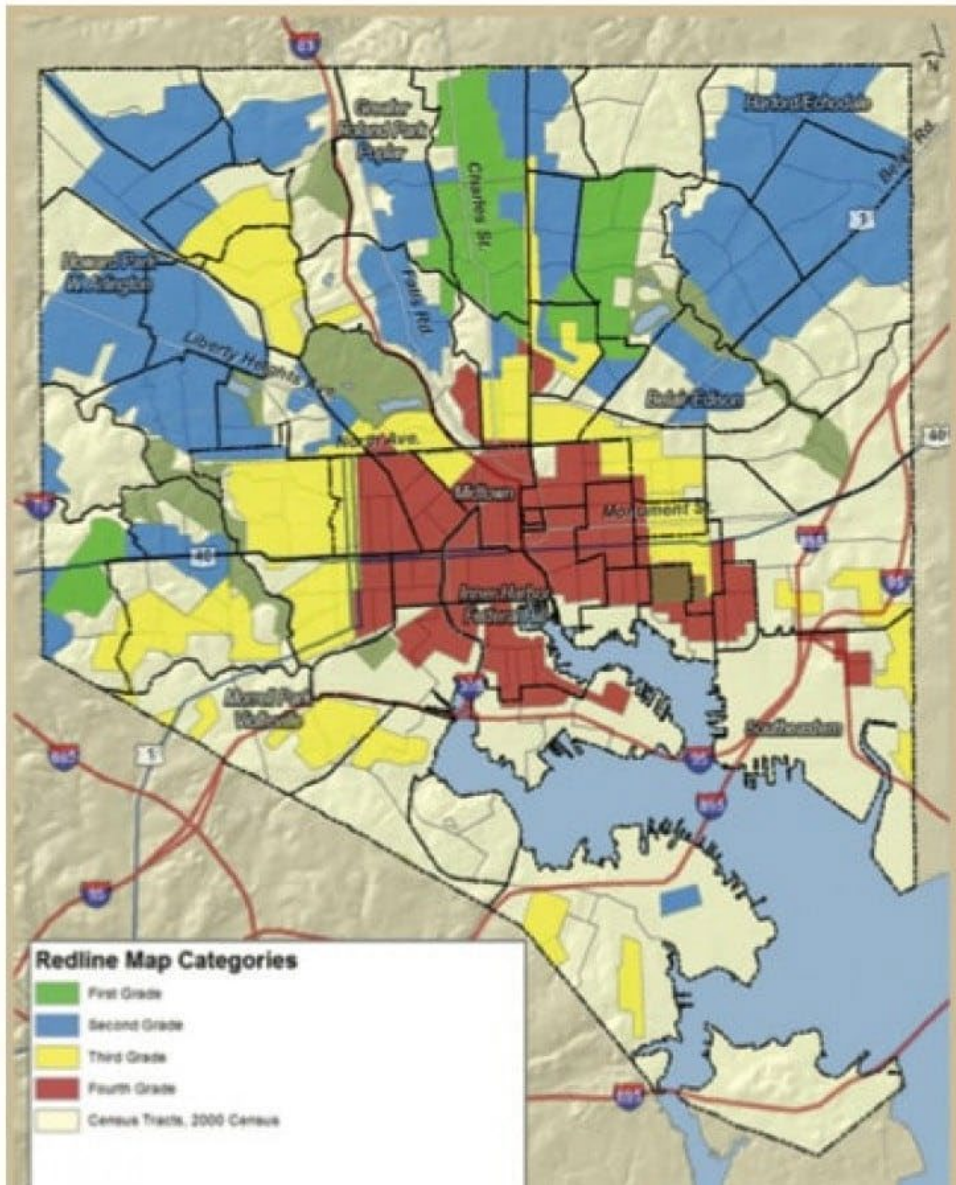


AMERICAN FORESTS
- SINCE 1875 -



Tree Inequity Has Consequences





Redlined Legacy Landscapes



Heat Risk:

Reduce temperatures by up to 10 degrees at street level

Air Quality:

Trap 822,000 tons of air pollutants
~180,000 cars / year

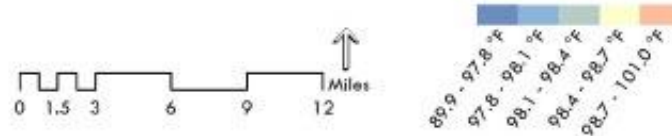
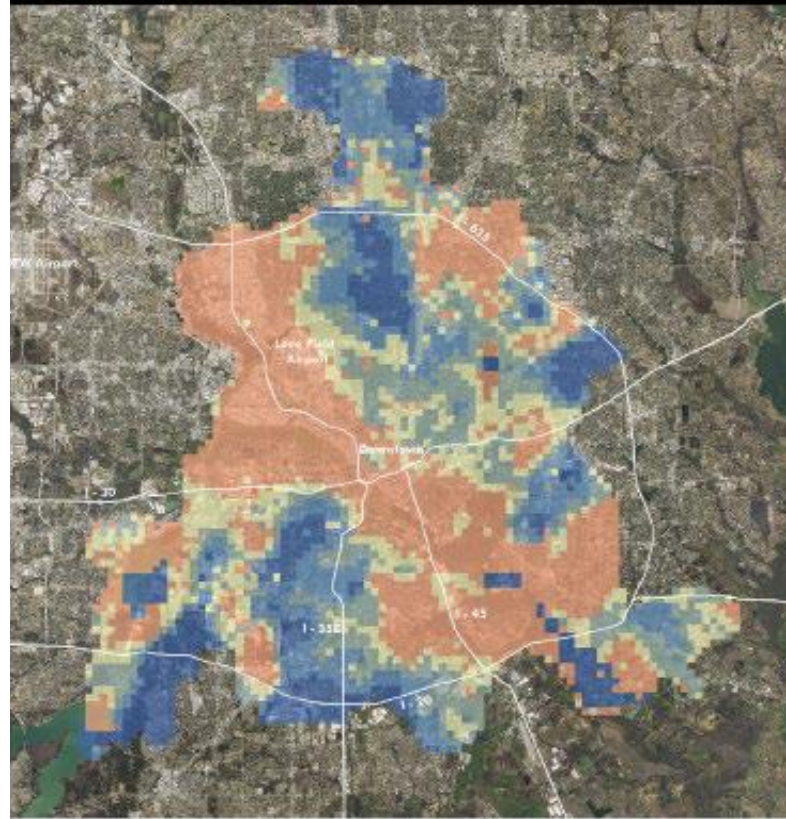
Energy Savings:

7.2% average reduction in household energy use for heating/cooling

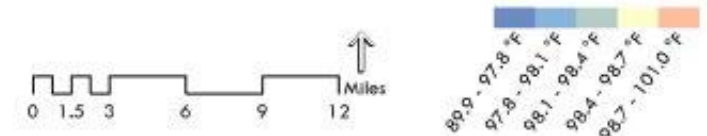
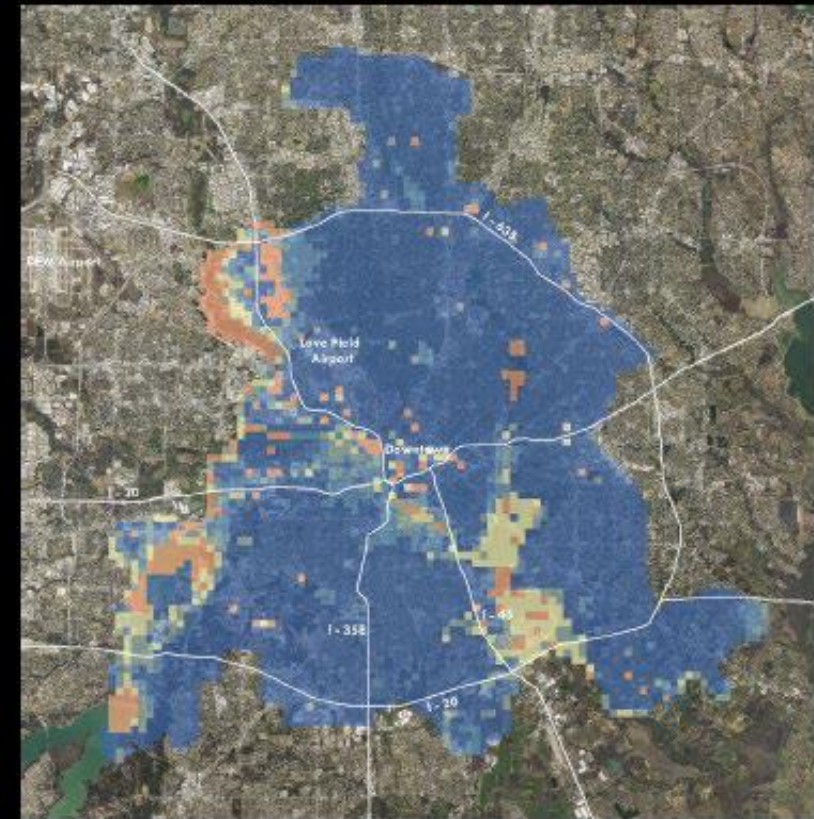
Job Creation:

25.7 jobs supported per \$1M investment

tree loss scenario



combined strategies scenario



<https://www.texas-trees.org/wp-content/uploads/2019/06/Urban-Heat-Island-Study-August-2017.pdf>

Tree Equity = Climate Action & Climate Justice



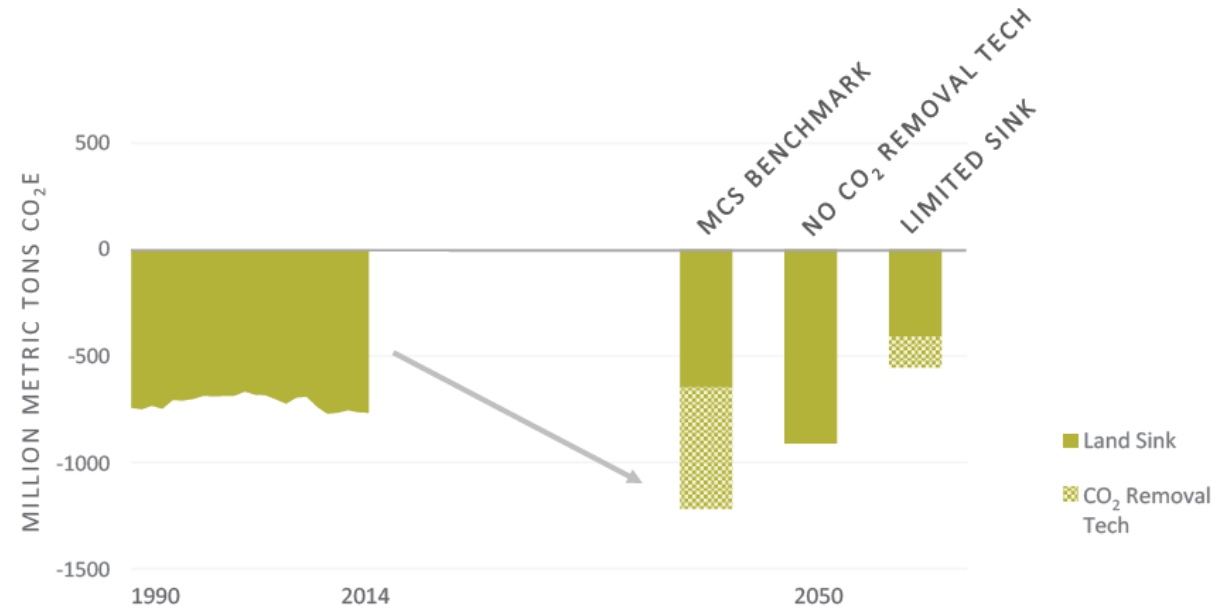
AMERICAN FORESTS
- SINCE 1875 -



United States Mid-Century Strategy FOR DEEP DECARBONIZATION

NOVEMBER 2016

**FIGURE 5.1: MCS
NEGATIVE EMISSIONS
SCENARIOS**



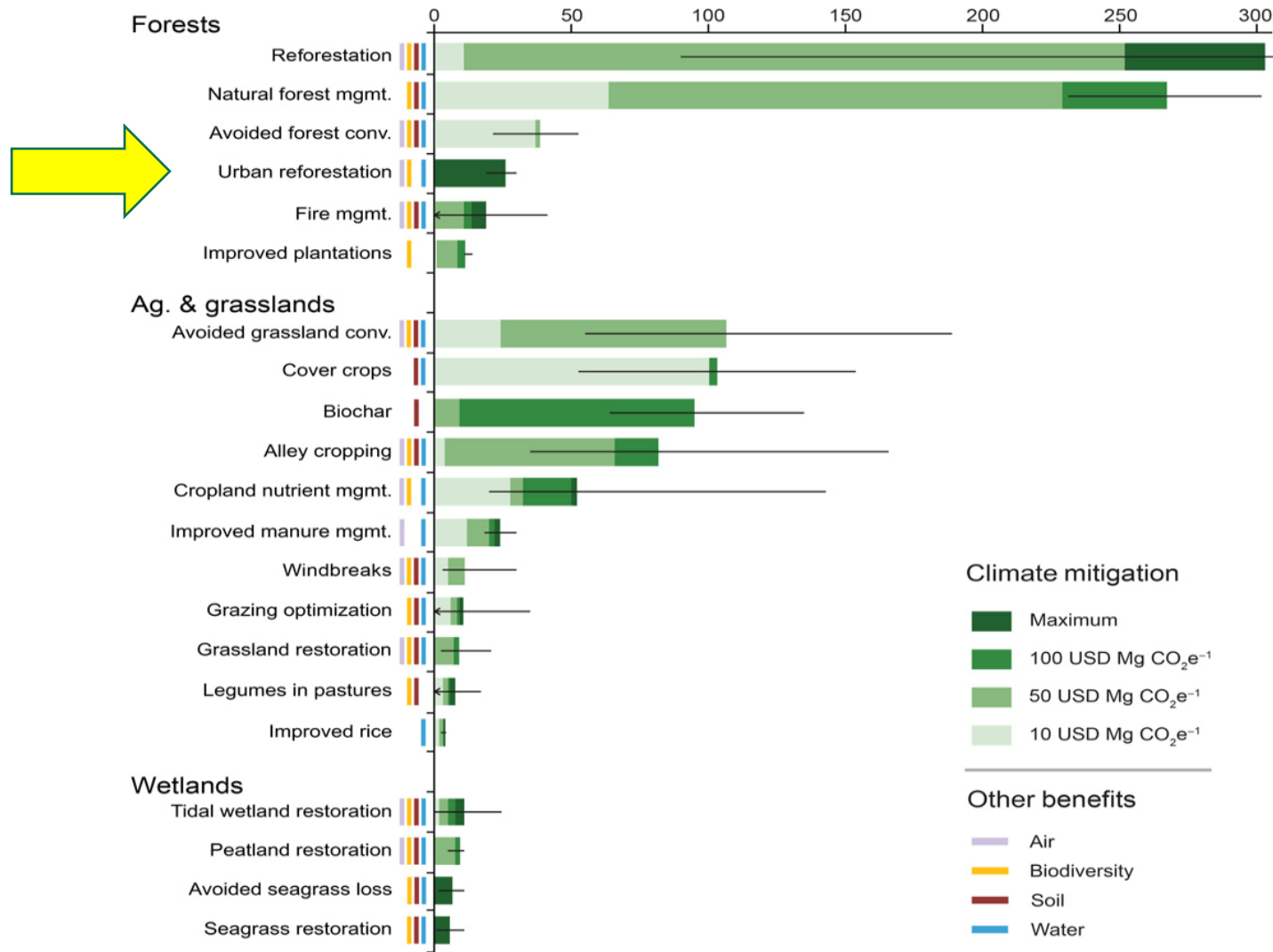
1990-2014 land sink levels compared to 2050 projections for MCS Benchmark, No CO₂ Removal Technologies, and Limited Sink scenarios (GCAM). Historical data based on U.S. GHG Inventory (EPA 2016a).

U.S. Forests Have Potential to Capture 30% or More of Future Emissions



AMERICAN FORESTS
- SINCE 1875 -

Climate mitigation potential in 2025 (Tg CO₂e year⁻¹)



**Urban Forests Currently Capture
Almost 2% of U.S. Emissions**

The Urban Forest Today

- **5.5 Billion urban trees**
- **68 million acres of urban forests**
- **3.6% of land in 2010 to 8.6% in 2060**
- **80-85% on private property**
- **39.4% average tree canopy cover**
- **Economic Impact**
 - **\$18.3 billion** Air pollution removal
 - **\$5.4 billion** energy reduction
 - **\$4.8 billion** carbon sequestration
 - **\$2.7 billion** pollutant emissions avoided



A photograph of a green tree in front of a brick wall. A bright light flare is visible on the right side of the wall. The text is overlaid on the image.

Lost Every Year in the U.S.
36 Million Urban/Community Trees
175,000 Acres Tree Canopy

40% of New Impervious Surfaces are Where Trees Used to Grow

David Nowak and Eric Greenfield, US Forest Service, 2018.

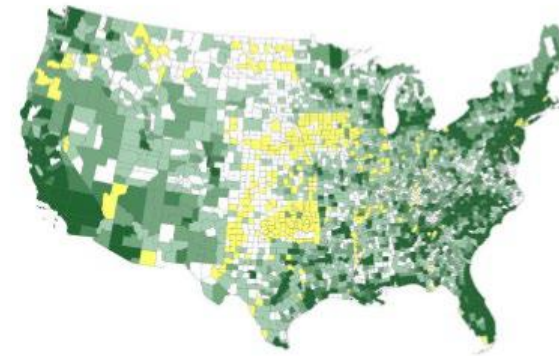
Sustain 39.4% tree canopy

- Establish 75 million trees / year
 - 50 million natural regeneration
 - 25 million planted
- 1 tree / ~5 acres / year

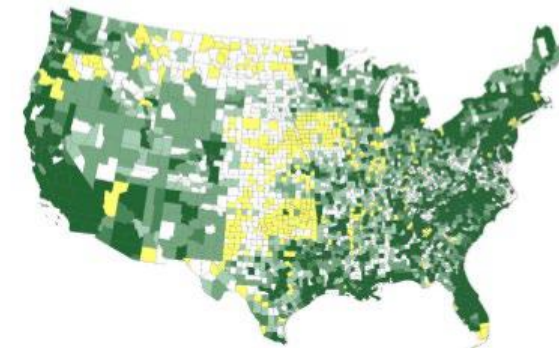
Increase tree canopy by 10%

- Establish 94 million more trees / year
 - 62 million natural regeneration
 - 31 million planted

Dr. David Nowak – US Forest Service



Not Urban -25,815 - 0 +1 - +500 +501 - +2,500 +2,501 - +5,000 +5,001 - +118,889



Not Urban -46,581 - 0 +1 - +500 +501 - +2,500 +2,501 - +5,000 +5,001 - +277,487

Figure 13. Change in net urban forest carbon sequestration (tC/yr): a) 2010-2030, b) 2010-2060.



How Many Trees Do We Need?



AMERICAN FORESTS
- SINCE 1875 -

Tree Equity Supports Full-Cycle Urban Forestry

- **Analyze**
 - Richmond Tree Equity Score Analyzer
- **Plan**
 - Boston Urban Forest Plan
- **Propagate**
 - Green Columbus Vacant Lot Nurseries
- **Maintain**
 - Detroit Conservation Corps
- **Reuse**
 - Baltimore Wood Project



Roots of Rock

Forest Health Restoration

Fender®



URBAN FORESTRY CAREER PATHWAY

Business Owner

\$100,000/yr
\$48.07/hr



Certified Arborist

+\$10,000/yr
+\$5/hr

Arborists and urban foresters are responsible for planting and maintaining urban trees, shrubs and woody plants. After gaining some work experience in urban forestry, an International Society of Arboriculture Certified Arborist credential can increase your base pay.

Urban Forester

\$68,265/yr
\$32.82/hr



Foreman/Crew Leader

\$54,804/yr
\$26/hr



Tree Climber

\$40,510/yr
\$19.47/hr



Groundworker

\$32,094/yr
\$15.43/hr



Tree Corps for Climate Justice

TAZO®



Communities with less green
space and fewer trees.



AMERICAN FORESTS
- SINCE 1875 -



CLIMATE STEWARDSHIP ACT
TITLE II - FORESTS

plant **400 MILLION NEW CITY TREES** by 2050

How it will happen:

Reforest America Grant Program
Provides cost-share grants to states, tribes, local governments, and non-profits to plant 1.6 billion trees by 2030 and over 6.5 billion trees by 2050. This includes dedicated funding for urban forests sufficient to plant 200 million trees, prioritized for under-served urban neighborhoods most in need of tree canopy cover and most at risk from climate change threats such as extreme heat.

The urban trees to be planted under this act will save more than 800 lives and avoid 200,000 incidences of heat and respiratory illness, while saving 638 TWh of electricity and 21.7 trillion BTU of gas for heating and cooking. These benefits will generate more than \$10 billion in healthcare and energy savings and will further reduce greenhouse gas emissions by avoiding emissions of 11.4 million metric tons of carbon dioxide equivalent.

 **Jad Daley**
@JadDaley

Huge #TreeEquity move in U.S. House! The TREE Act was passed to provide \$50M per year for planting 🌳 where needed most for energy savings, heat resilience & health equity. Bravo 🙌 @repcleaver @RepMcKinley from @AmericanForests! @1t_org #TrillionTrees cleaver.house.gov/media-center/p...



ALT

Tree Equity Has Policy Momentum



A platform for the trillion tree community.





Community Assessment & Goal-Setting Tool

The Community Assessment and Goal-Setting Tool will be most useful for people who are already somewhat familiar with their community's urban forest programs.

[GET STARTED →](#)

[CREATE AN ACCOUNT OR LOGIN](#)



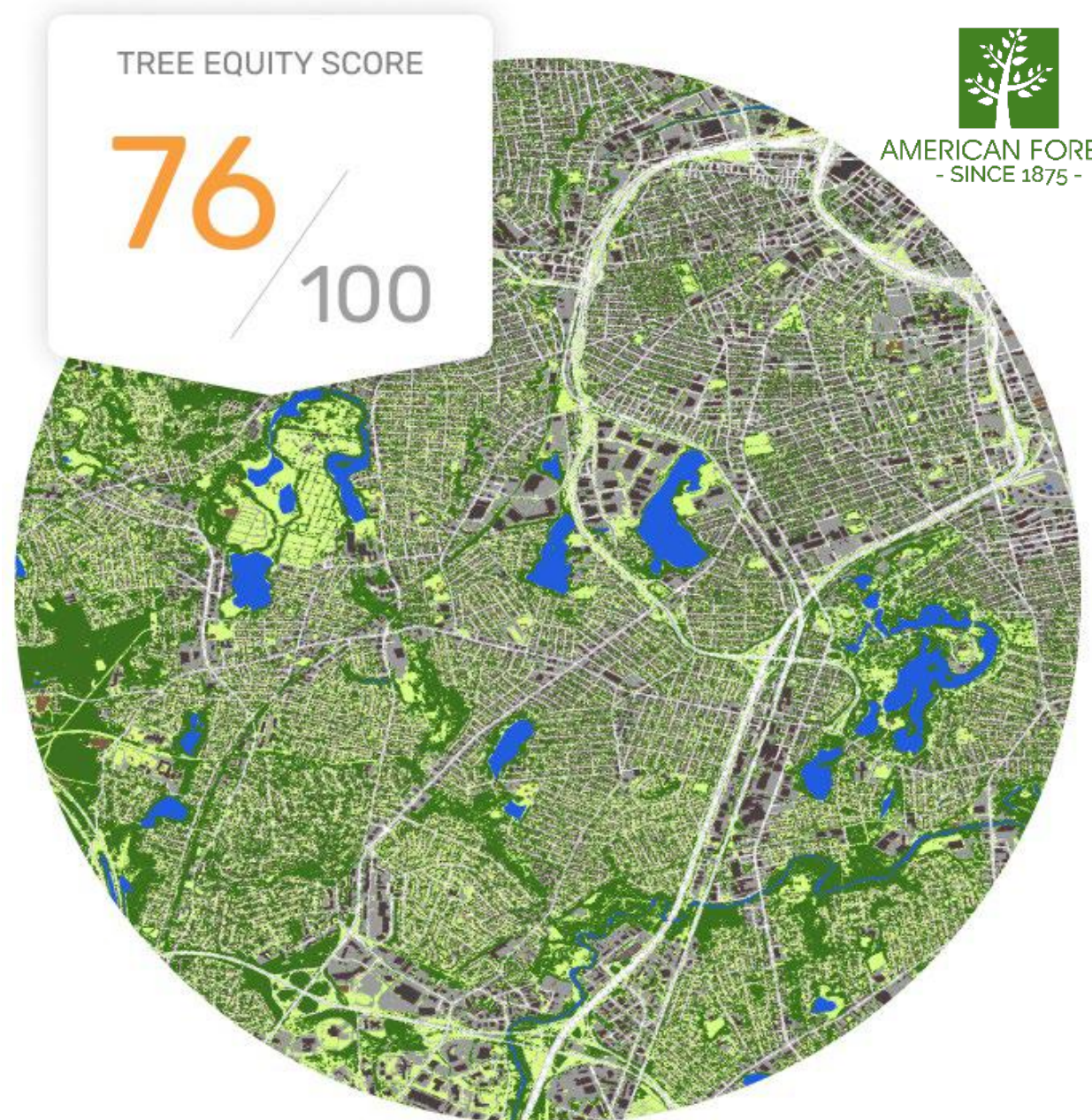
VibrantCitiesLab.com



AMERICAN FORESTS
- SINCE 1875 -

TREE EQUITY SCORE.ORG

Tree Equity Score is a way to measure how well a neighborhood or municipality is ensuring that the benefits of urban tree canopy are reaching low-income communities, populations of color and other populations that are particularly susceptible to extreme heat and other conditions.



HOW IT WORKS



NEED



PRIORITY



Existing tree canopy



Population density



Income



Employment



Race



Age



Surface temperature

WHAT YOU GET

Need + Priority = Tree Equity Score

Scores are normalized between 0 and 100.

Tree Equity Score prioritizes Tree planting across neighborhoods with canopy gaps.

A score of 100 means that a neighborhood has achieved Tree Equity.

Two Scales of Tool:

- Nationwide: Tree Equity Score Explorer
- Deep Dive: Tree Equity Score Analyzer (TESA)



AMERICAN FORESTS
- SINCE 1875 -

