



# Urban Forestry as a Critical Component of a Thriving Region for People and Nature

Dana Coelho, Colorado State Forest Service

EEE Forum

March 22, 2021



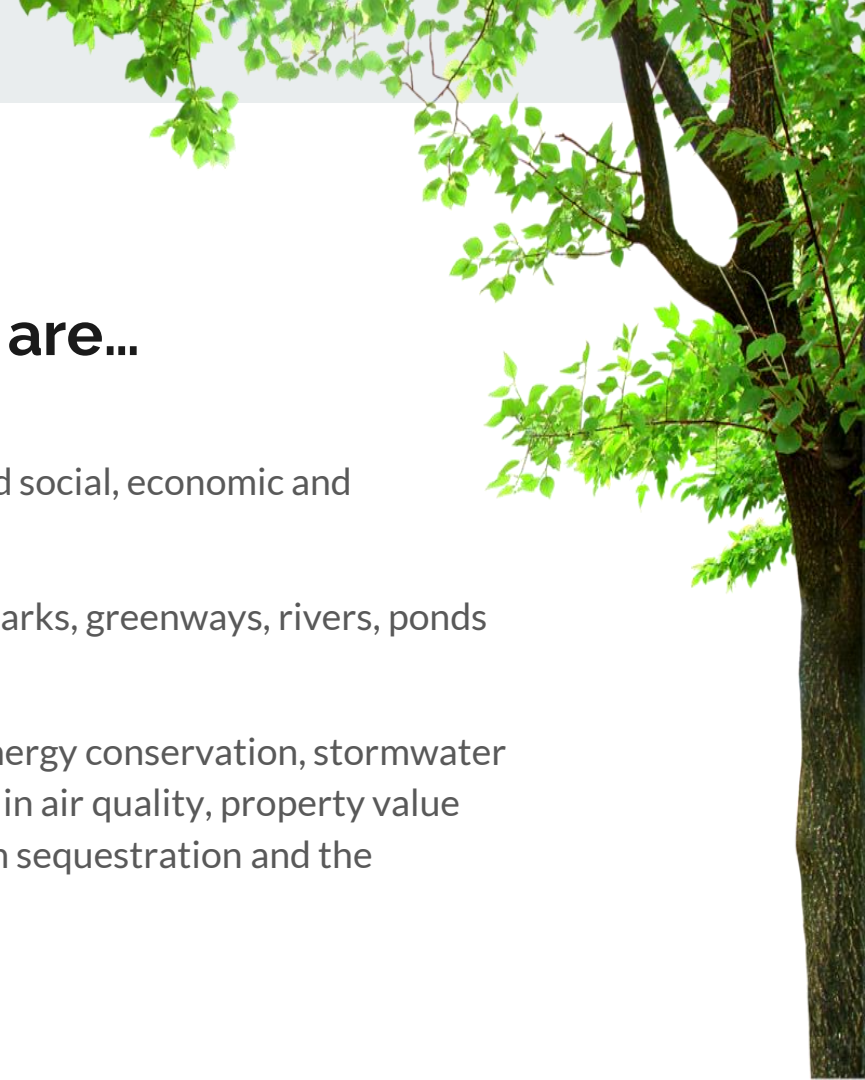
## Urban and community forests are...

Part of dynamic urban ecosystems with interconnected social, economic and ecological components.

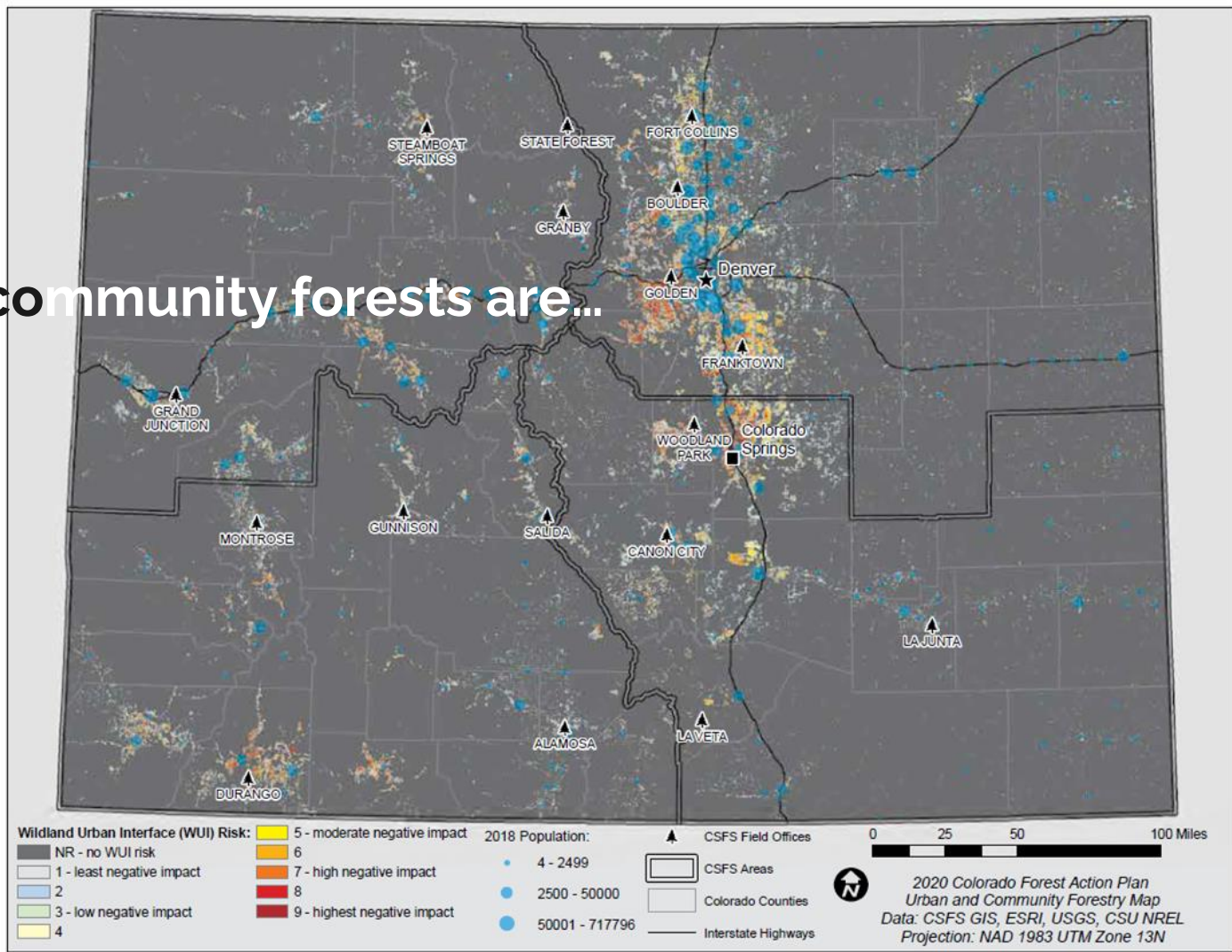
Made up of trees in yards, streetscapes, open spaces, parks, greenways, rivers, ponds and habitat corridors.

Responsible for the provision of clean air and water, energy conservation, stormwater mitigation, reduction in noise pollution, improvements in air quality, property value enhancement, connectivity of habitat corridors, carbon sequestration and the betterment of mental and physical health.

<https://csfs.colostate.edu/forest-action-plan/>



# Urban and community forests are...



Urban and community forests are...

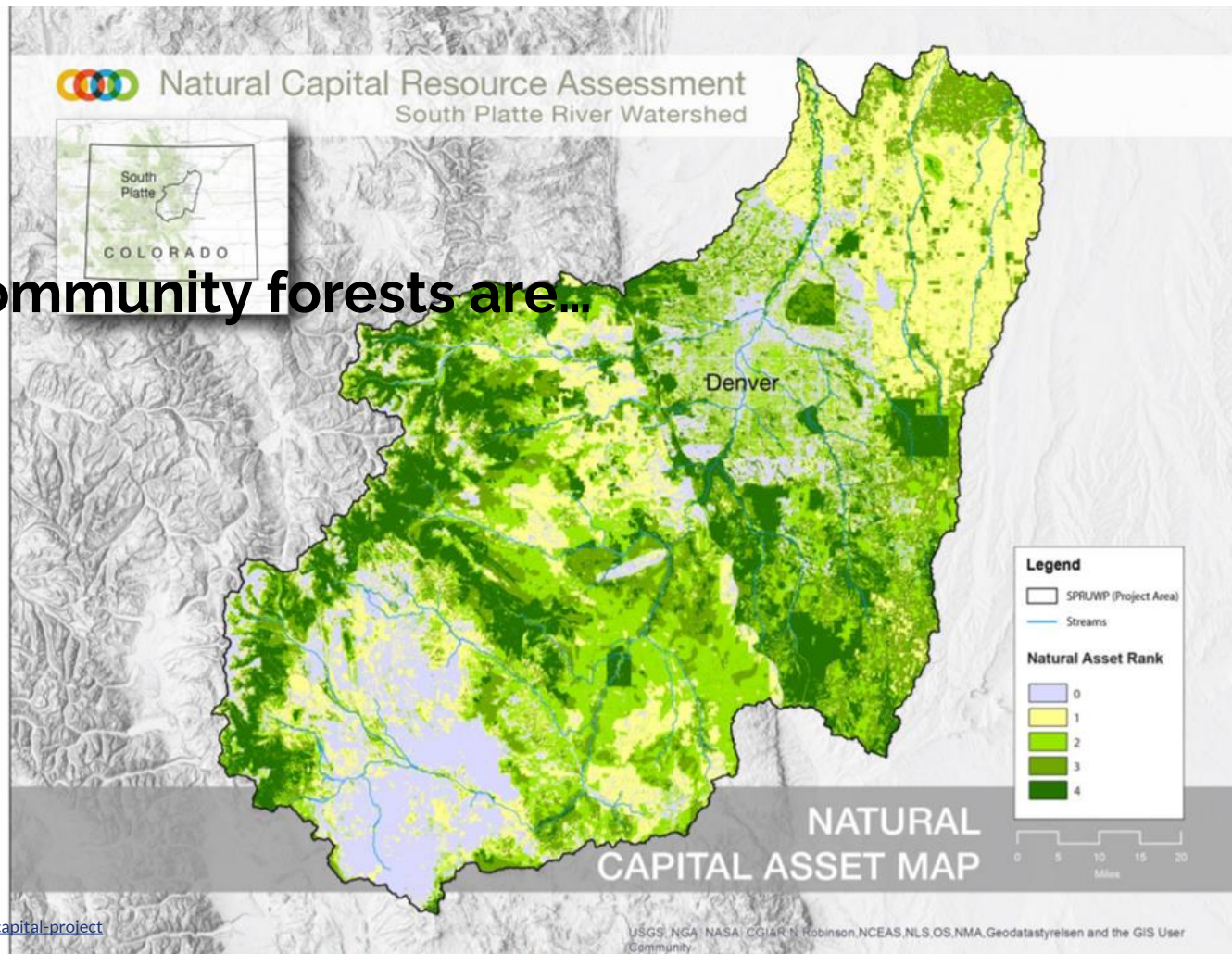
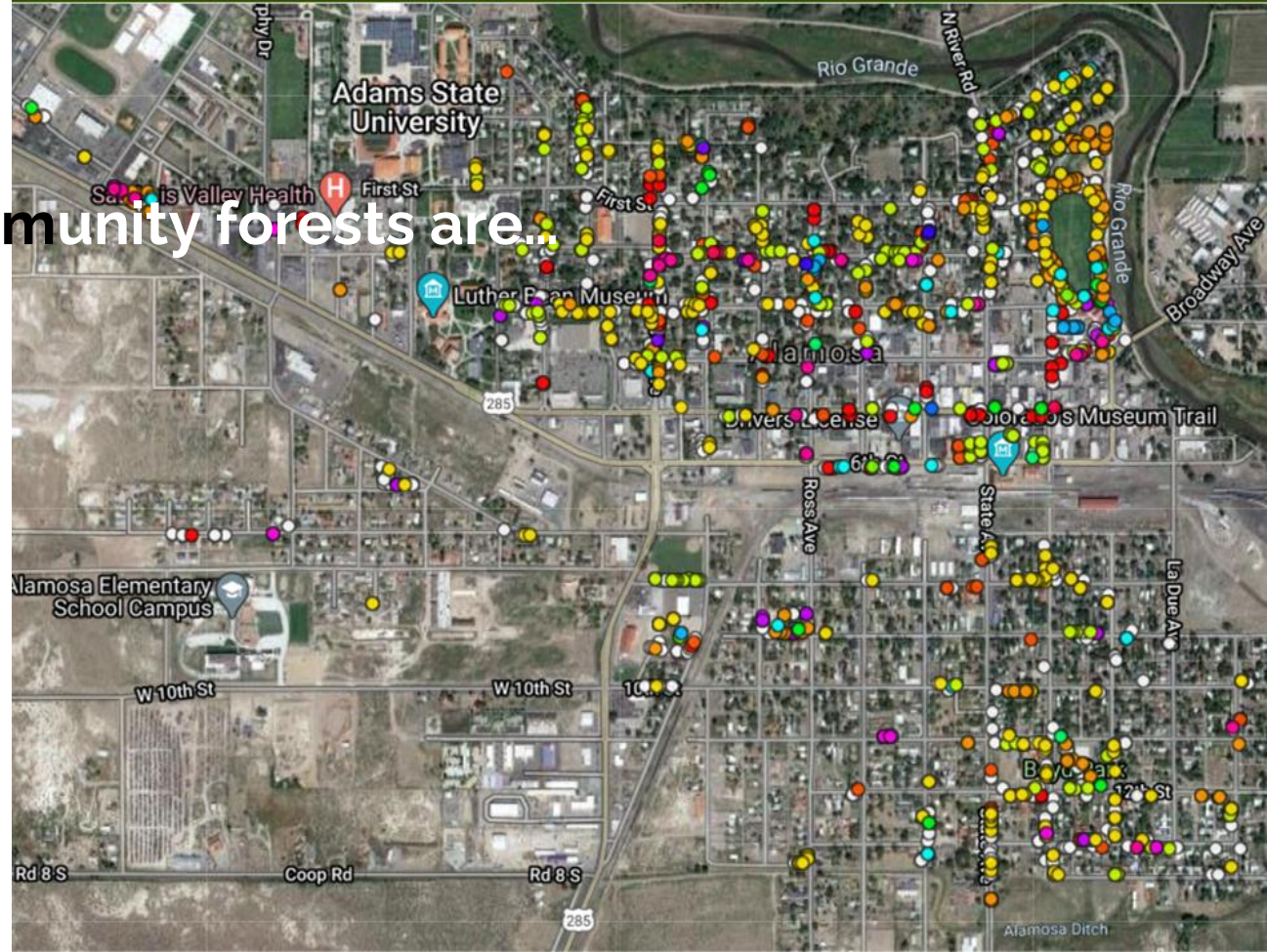
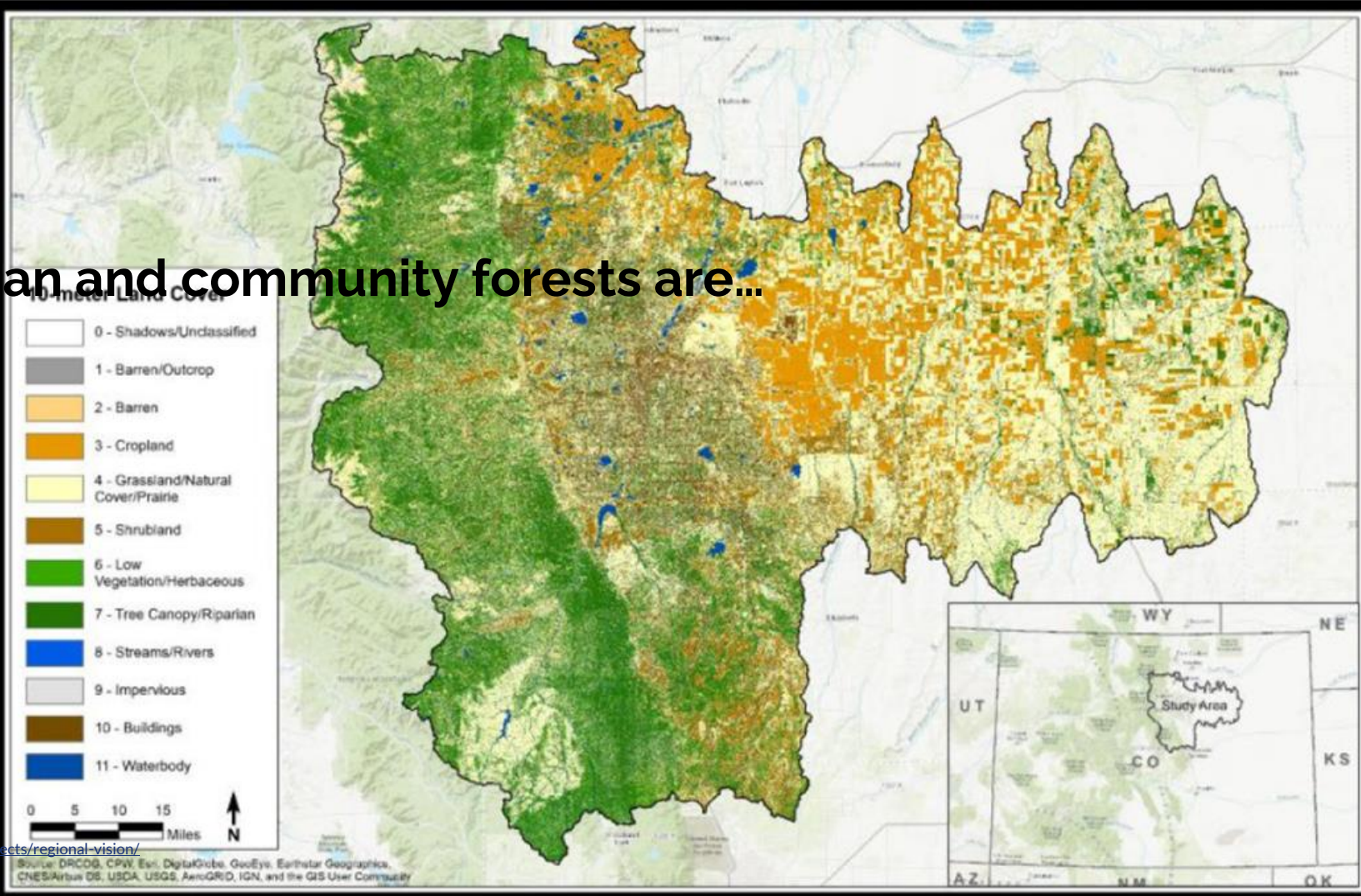


Figure 11. Natural Capital Asset Map of the Entire South Platte Watershed

Urban and community forests are...



# Urban and community forests are...





# Forest Action Plan

## GOAL #1



**CONSERVE**



**PROTECT**



**ENHANCE**

**PROMOTE THE ROLE AND INFRASTRUCTURE DEVELOPMENT OF URBAN AND COMMUNITY FORESTS TO ADVANCE PUBLIC HEALTH, WELLNESS AND SAFETY**

Improving and enhancing urban living environments through healthy and resilient community forests is a cost-effective tool that contributes to positive health outcomes. Strategic planning related to population density and growth, green and gray infrastructure, expansion of the wildland-urban interface and the enhancement of public spaces will maximize community and ecosystem sustainability.

## GOAL #2



**ENHANCE**

**PROMOTE AND INCREASE PUBLIC AWARENESS, LEADERSHIP DIVERSITY AND EQUITY WITHIN THE URBAN FORESTRY COMMUNITY**

Current and projected changes in Colorado's demographics require understanding and engaging different perspectives, cultures, genders and ages. This broadens economic and social opportunities while building and strengthening

## GOAL #3



**CONSERVE**



**PROTECT**



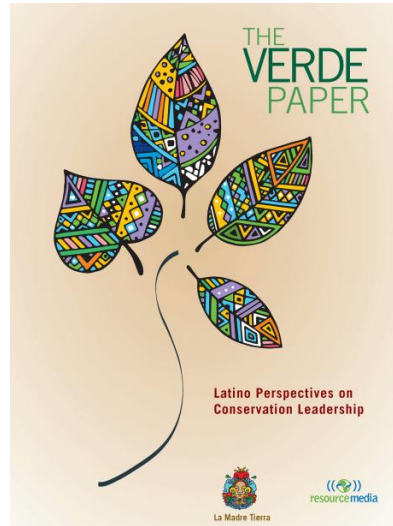
**ENHANCE**

**IMPROVE AND ENHANCE ECOSYSTEM HEALTH AND BIODIVERSITY FOR LONG-TERM RESILIENCE BY INTEGRATING URBAN AND COMMUNITY FOREST MANAGEMENT, MAINTENANCE AND STEWARDSHIP INTO ALL SCALES OF PLANNING**

A dynamic green infrastructure provides residents, cities, towns and municipalities with a sustainable job market, stormwater management, improved habitat, quality drinking water, energy conservation, and



# We are standing on the shoulders of giants...



# CONVERGENCE:

Water/Climate

+

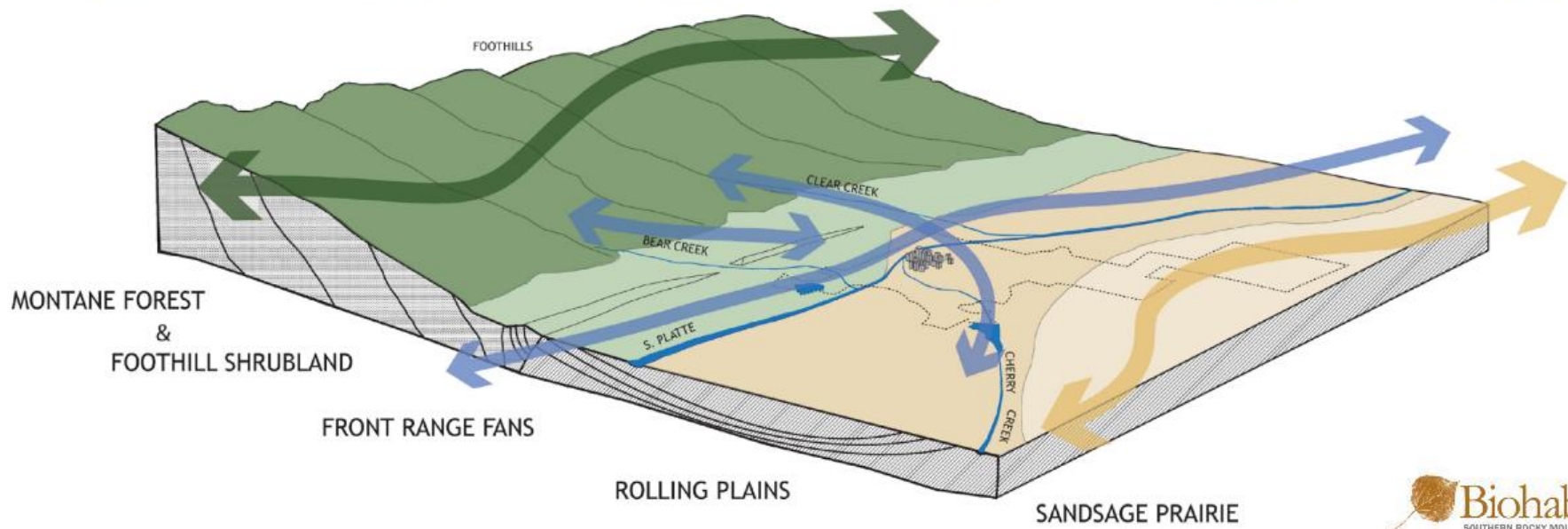
Habitat Loss

+

Environmental Justice



# Regional planning framework & ecoregions





# Urban Forestry as a Critical Component of a Thriving Region for People and Nature

Dana Coelho, Colorado State Forest Service

<https://www.linkedin.com/in/danacoelho/>

[dana.coelho@colostate.edu](mailto:dana.coelho@colostate.edu)

303-349-9807

