



**Ethics and Ecological Economics Forum
Beyond GDP: Measuring Wellbeing & Quality of Life
in a Time of COVID-19**

Creating Healthy Places

**Dr. Rocky Piro, FAICP
Director, Colorado Center for Sustainable Urbanism
8 June 2020**



COLORADO HEALTHY PLACES COLLABORATIVE



CREATING HEALTHY PLACES

CU DENVER | COLORADO HEALTHY PLACES COLLABORATIVE RESOURCES

➤ Healthy Places Guidebook

- ❖ Best Practices

- today ❖ Health Assessment Lens

- ❖ Model Health Element

➤ GuideBox to Healthy Places

- ❖ WalkGuide to Healthy Places

➤ Health Design Websites

- ❖ Health + Design Initiative

- ❖ Colorado Healthy Places Collaborative



<https://healthdesigncolorado.org/>

<https://coloradohealthyplaces.org/>

HEALTH ASSESSMENT LENS



Designed to inform designers, planners, & decision-makers of health conditions prior to beginning a project, plan process, or program.

Purpose: identify issues related to health & built environment in order to inform a health-based approach to design, planning & decision-making.

It continues to be a resource for comprehensive evaluation through development of plan or project, & into implementation.

Intent: Health in all policies & decisions.

HEALTH ASSESSMENT LENS



Equity and Justice



Harmony with Nature



Economic Resiliency



Healthy Community



Human Well-being



Education and Wellness



Healthy Homes and Buildings



Healthy Connections

*included in Guidebook & GuideBox
also on-line version
can be used as DIY tool*



Equity and Justice

Achieving social equity & environmental justice are critical to creating healthy places for all people. It is critical to understand an area's past & current conditions to accurately address equity & justice.

Know about past environmental, social, and economic damage in the community. Provide opportunities to repair past damage & introduce new benefits.

Displacement results in multiple health impacts.

Human Wellbeing

Environmental psychology tells us that healthy living is not simply a result of the presence of resources & absence of threats. Human wellbeing must be approached holistically.

Be informed about existing health conditions in the community. Factor in physical, mental, and social wellness.

Harmony with Nature

Know the condition of the natural environment, including contaminated soils, water pollution, and air toxins.

Contribute to restoring damaged ecosystems to a more functional state.

Education and Wellness

Education impacts the health & wellness of all people. Cultural differences matter as well— cultural knowledge can eclipse formal education in many lifestyle choices.

This includes physical accessibility to educational facilities, as well as opportunities for residents to have the means & opportunities for education.

Economic Resiliency

Economics play a role in human health. The built environment can support the creation of business & encourage economic opportunities, which can provide health benefits.

Know the economic and employment conditions of the community – including living wages, affordable workforce housing, locally owned businesses, and green jobs.

Bridge economic disparities & enhance opportunities for residents.

Healthy Homes and Buildings

Sound housing is essential to a person's ability to deal with every other aspect of his or her life.

Assess existing conditions for siting & orienting structures to maximize health benefits.

Building materials should be appropriate for the climate & context and meet health standards to prevent exposure to toxins.

Home design should factor in "universal housing principles" for residents of all ages to have maximum accessibility & freedom from hazards within the home.

Healthy Community

Contribute to creating more "complete" communities that contribute to & reinforce the existing character of place.

Minimize exposure to hazards and potential disasters, such as flooding, steep slopes, environmentally sensitive areas, & more.

Healthy Connections

Mobility and accessibility can impact the physical & mental wellbeing of people.

Provide mobility for all.¹

Advance state-of-the-art solutions for healthy infrastructure & services.

Give attention to maximizing easy access to sidewalks & bicycling facilities, as well as connections to transit stops & stations.

1. Nearly 1/3 of population do not own or operate cars. (Federal Transit Authority)

HEALTH ASSESSMENT LENS



HEALTH ASSESSMENT LENS OUTCOMES



impacts of displacement



local food



integrated recreation planning



contaminated sites

GuideBox Events: Jefferson Park, Sloan Lake, Aurora, Wheat Ridge

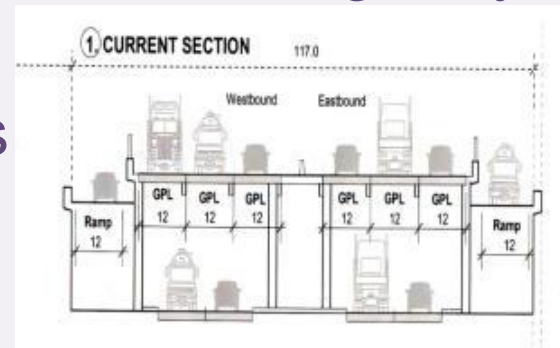
I-70 project used . . .

environmental impact assessment (federal requirement)
not a health assessment . . . but what if it had?

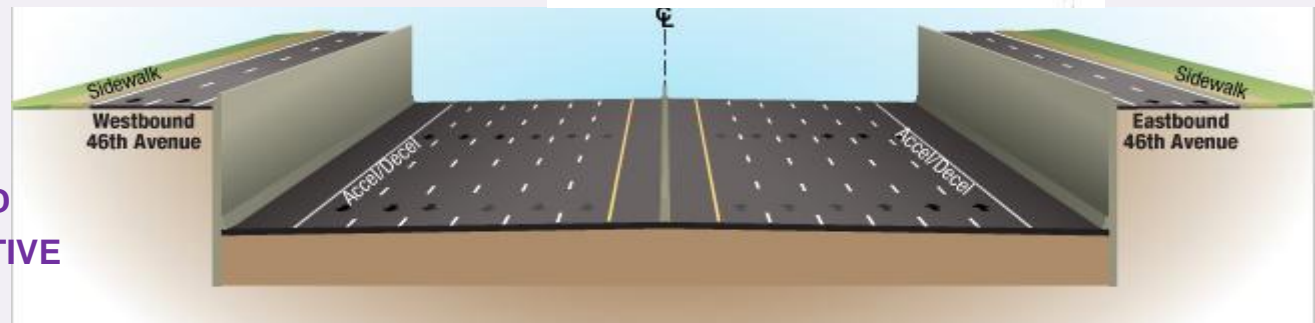


CASE STUDY EXAMPLE

- Project overview: replace elevated freeway through environmental justice neighborhoods (as recognized by Environmental Protection Agency)
- State selected alternative: replace 115' wide viaduct, with 315' wide lowered highway
- requires removal of more than 50 families
- 4 additional lanes = "managed lanes"



EXISTING
VIADUCT



SELECTED
ALTERNATIVE

Quick Facts

about the impacted communities

- ❖ 84% Latino | 41% of families live below poverty
- ❖ home ownership 61% (citywide = 52%)
- ❖ high number of multigenerational households
- ❖ significant elevated exposure to air pollution within 500 feet of major highway
- ❖ asthma levels near 40% (citywide = 28%)
- ❖ higher levels of cardiovascular disease
- ❖ 60% of population is obese
- ❖ lack of access to healthy foods
- ❖ less than 1/2 of streets have sidewalks
- ❖ more than 1/3 of residents do not drive cars
- ❖ numerous hazardous intersections

Source: City Health Impact Assessment



I-70 Case Study

State's Mitigation Response



insulate homes

**schoolyard placed on
deck over highway**



**litigation – state has now agreed
to fund health assessment – but to be complete after highway project**

WHAT IF . . . HEALTH LENS HAD BEEN APPLIED?

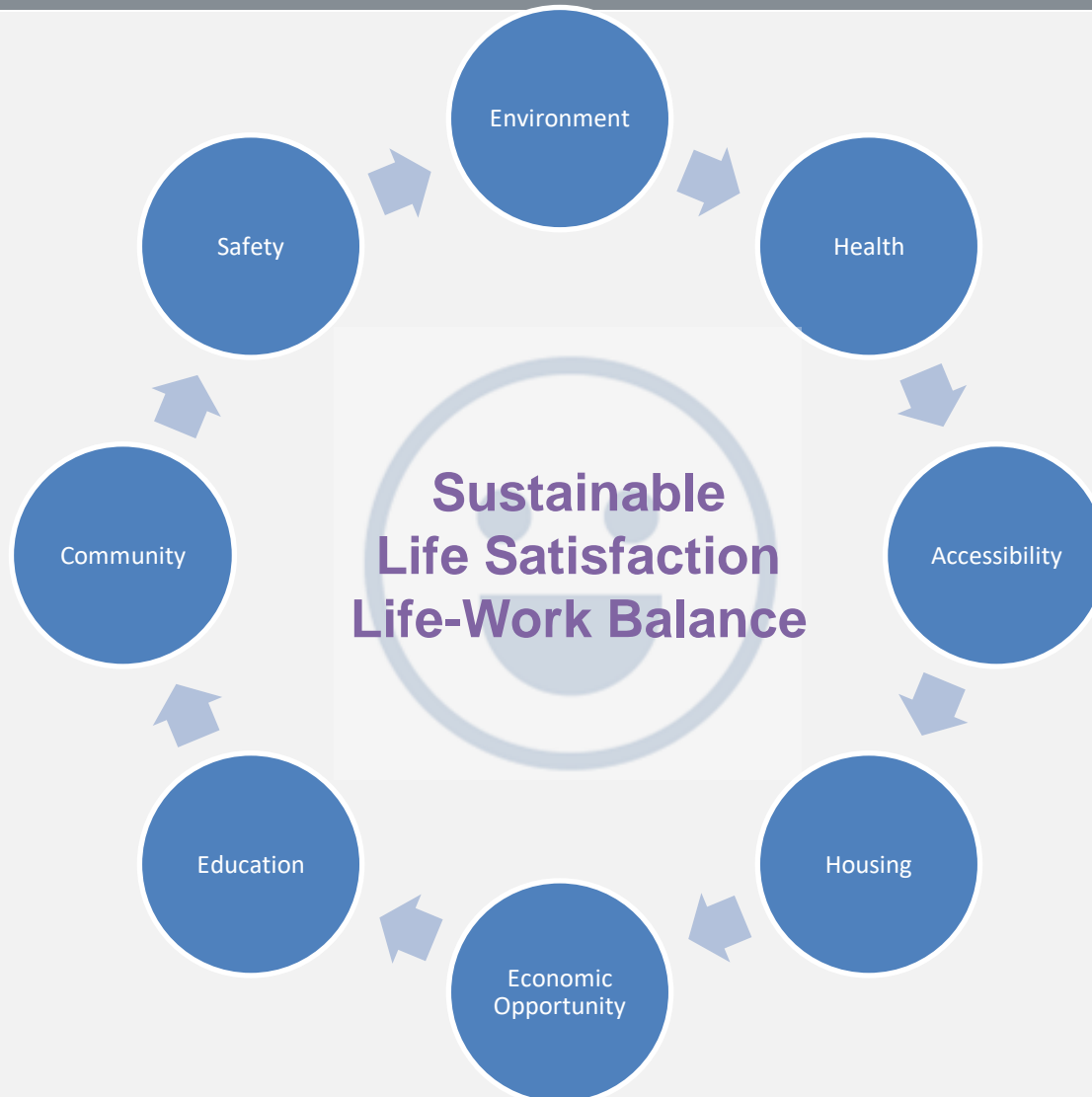
perhaps . . .

- ❖ Context sensitive
- ❖ No displacement
- ❖ Retain community & its character
- ❖ Reduced transportation-related pollutants
- ❖ Restored connectivity
- ❖ Climate friendly
- ❖ Local economic opportunity



ENVIRONMENT - ECONOMY - EQUITY

HEALTH | INTEGRATED APPROACH





Ethics and Ecological Economics Forum
8 June 2020

Creating Healthy Places

Rocky Piro, PhD, FAICP
docroc93@gmail.com