

COVID-19: Uncovering Important Social Health Factors



Jasmine Bains

Research Analyst

**Beyond GDP: Measuring Well-Being and
Quality of Life in a Time of COVID-19**

June 8, 2020



COLORADO
HEALTH
INSTITUTE

ABOUT US

We believe that sound evidence and solid analysis lead to better health policy, and that better health policy leads to healthier Coloradans.

That is our work as Colorado's leading nonprofit and nonpartisan health policy research group.

And we are passionate about it.

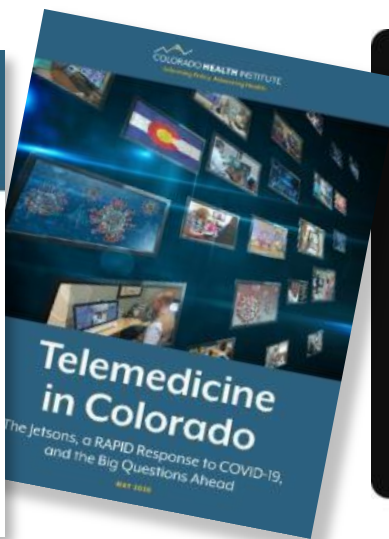
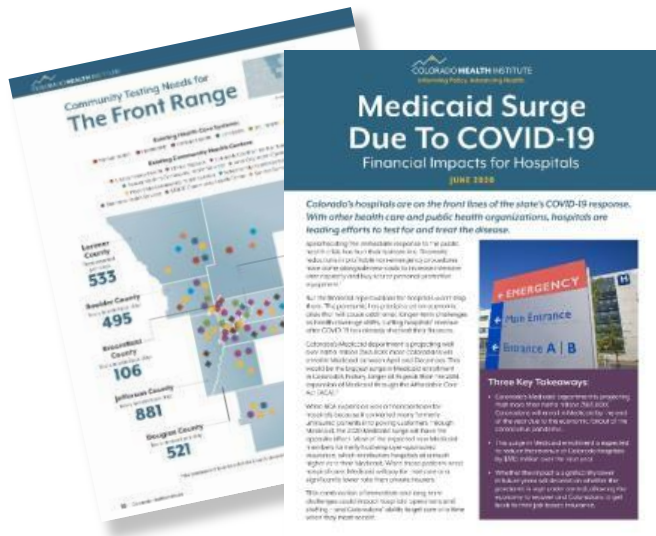
How CHI Thinks About Well-Being

- Increase visibility of social factors
- Use analysis to track well-being
 - Colorado Health Access Survey
 - Root Causes
 - Social Health Information Exchange

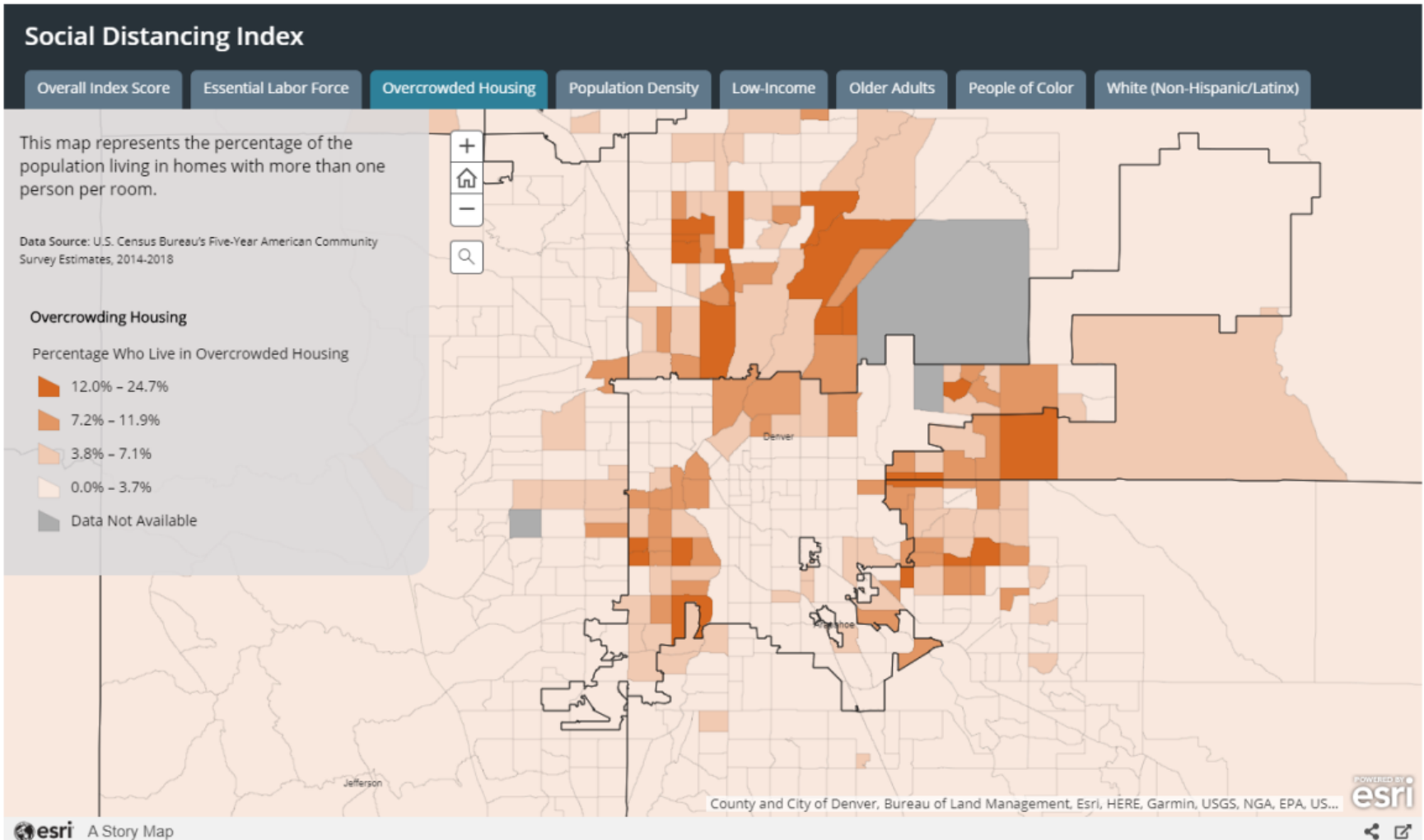


CHI's Response During COVID-19

- Social Distancing Index
- Telemedicine
- Metro Denver Partnership for Health
- Insurance Coverage and Access to Care

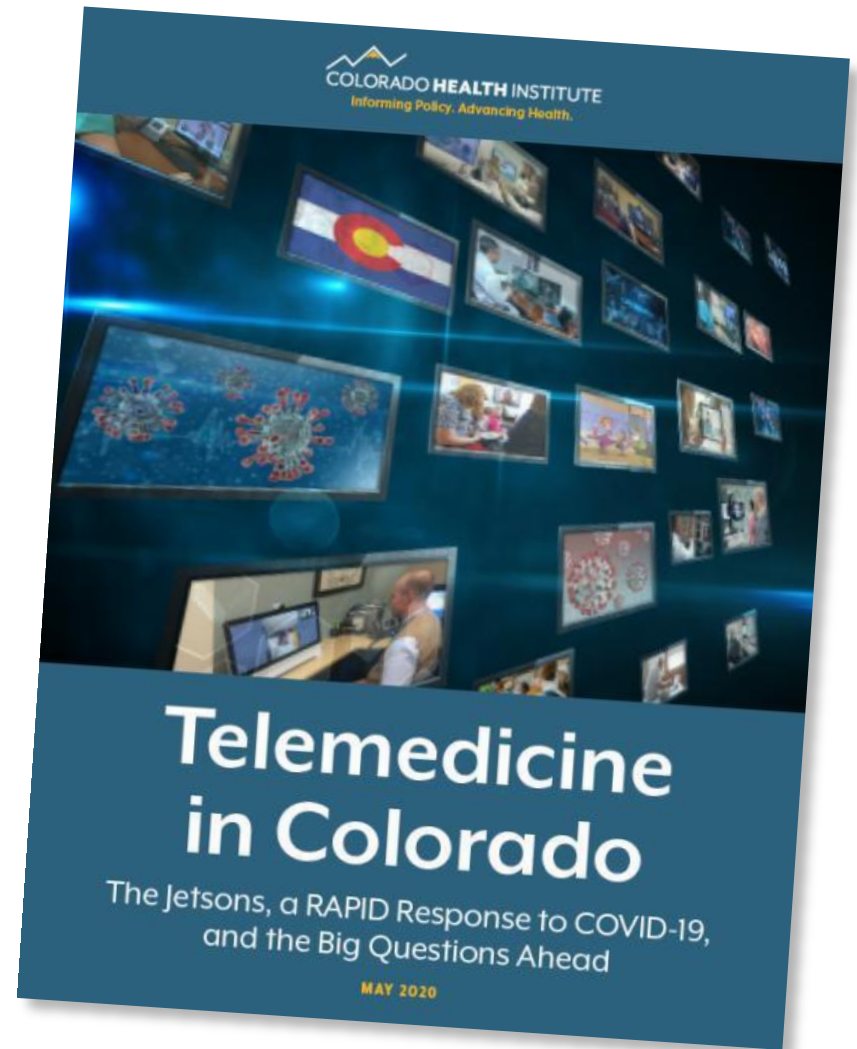


Social Distancing Index



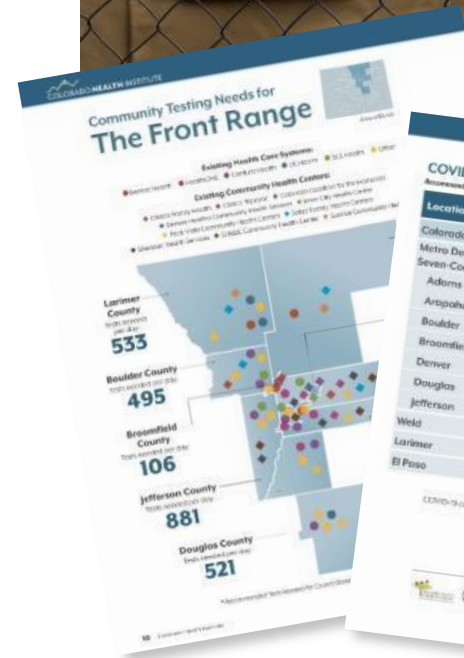
Telemedicine in Colorado

1. Digital divide
2. Location matters: rural vs. urban



Metro Denver Partnership for Health

1. Testing needs in Colorado counties
2. How to reach vulnerable populations
3. Collaboration between local leaders



COVID-19 Testing Numbers for the Front Range

Location	2018 Population	Tests Needed Per Day
Colorado	5,694,511	8,655
Metro Denver and Boulder Seven County Population	3,978,719	4,766
Adams	581,469	777
Arapahoe	651,345	990
Boulder	325,480	495
Broadfield	69,455	106
Denver	717,796	1,091
Douglas	342,847	321
Jefferson	579,489	881
Weld	314,250	478
Larimer	350,362	533
El Paso	714,398	1,066

Insurance Coverage & Access

1. Expecting Medicaid enrollment growth to be larger than ACA expansion
2. Health insurance impacts access to care





Jasmine Bains

@jbains0811

bainsj@coloradohealthinstitute.org

720.382.7074



COLORADO HEALTH INSTITUTE

coloradohealthinstitute.org   @COHealthInst